

Datasheet for ABIN200008
anti-STRADA antibody (AA 300-350)



[Go to Product page](#)

1 Image

Overview

Quantity:	100 µg
Target:	STRADA
Binding Specificity:	AA 300-350
Reactivity:	Human
Host:	Rabbit
Clonality:	Polyclonal
Conjugate:	This STRADA antibody is un-conjugated
Application:	Western Blotting (WB)

Product Details

Immunogen:	A portion of amino acids 300-350 of human STRAD (isoform 1). Type of Immunogen: Protein fragment
Specificity:	A portion of amino acids 300-350 of human STRAD (isoform 1) was used as the immunogen.
Purification:	Protein G purified

Target Details

Target:	STRADA
Alternative Name:	STRADA / LYK5 (STRADA Products)
Background:	Name/Gene ID: STRADA Subfamily: STLK

Target Details

Family: Protein kinase

Synonyms: STRADA, Protein kinase LYK5, LYK5, Stlk, NY-BR-96, PMSE, STE20-like pseudokinase, STE20-related adapter protein, STRAD, STRAD alpha

Gene ID: 92335

UniProt: [Q7RTN6](#)

Pathways: [AMPK Signaling](#)

Application Details

Application Notes: Approved: WB (0.5 - 2 µg/mL)

Comment: Target Species of Antibody: Human

Restrictions: For Research Use only

Handling

Format: Liquid

Concentration: Lot specific

Buffer: PBS, 0.2 % gelatin, 0.05 % sodium azide.

Preservative: Sodium azide

Precaution of Use: This product contains Sodium azide: a POISONOUS AND HAZARDOUS SUBSTANCE which should be handled by trained staff only.

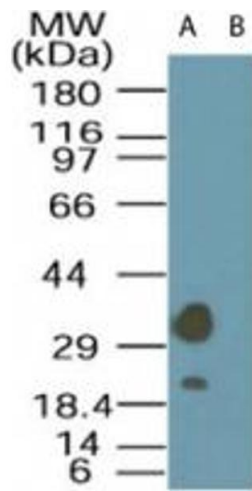


Image 1.