

Datasheet for ABIN201707

anti-S1PR4 antibody**1** Image[Go to Product page](#)

Overview

Quantity:	100 µg
Target:	S1PR4
Reactivity:	Human
Host:	Mouse
Clonality:	Monoclonal
Conjugate:	This S1PR4 antibody is un-conjugated
Application:	Western Blotting (WB), Immunofluorescence (IF)

Product Details

Immunogen:	Synthetic peptide derived from the C terminal of the EDG6 (S1P4) protein
	Type of Immunogen: Synthetic peptide
Purification:	Protein A/G purified

Target Details

Target:	S1PR4
Alternative Name:	S1PR4 / SIP4 / EDG6 (S1PR4 Products)
Background:	Name/Gene ID: S1PR4
	Subfamily: Lysophospholipid/Lysosphingolipid
	Family: GPCR

Target Details

Synonyms: S1PR4, EDG6, S1P receptor 4, S1P receptor Edg-6, S1P(4) receptor, EDG-6, LPC1, S1P4, SLP4

Gene ID: 8698

Application Details

Application Notes: Optimal working dilution should be determined by the investigator.

Restrictions: For Research Use only

Handling

Format: Liquid

Concentration: Lot specific

Buffer: PBS, 0.08 % Sodium Azide

Preservative: Sodium azide

Precaution of Use: This product contains Sodium azide: a POISONOUS AND HAZARDOUS SUBSTANCE which should be handled by trained staff only.

Handling Advice: Aliquot to Avoid freeze/thaw cycles. Store undiluted.

Storage: -20 °C

Storage Comment: Store at -20°C. Aliquot to avoid freeze-thaw cycles. Store undiluted.

Images

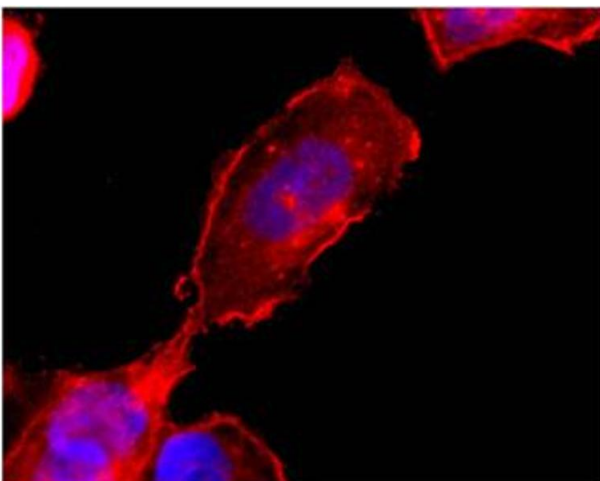


Image 1.