

Datasheet for ABIN201748
anti-NPDC1 antibody



[Go to Product page](#)

1 Image

Overview

| | |
|--------------|--------------------------------------|
| Quantity: | 100 µg |
| Target: | NPDC1 |
| Reactivity: | Human, Mouse, Rat |
| Host: | Mouse |
| Clonality: | Monoclonal |
| Conjugate: | This NPDC1 antibody is un-conjugated |
| Application: | Western Blotting (WB) |

Product Details

| | |
|---------------|----------|
| Isotype: | IgG1 |
| Purification: | Purified |

Target Details

| | |
|-------------------|----------------------------------------------------------------------------|
| Target: | NPDC1 |
| Alternative Name: | NPDC1 (NPDC1 Products) |
| Background: | Name/Gene ID: NPDC1 Synonyms: NPDC1, CAB, CAB-, CAB1, CAB-1, NPDC-1 |
| Gene ID: | 56654 |
| UniProt: | Q9NQX5 |

Application Details

Application Notes: Optimal working dilution should be determined by the investigator.

Restrictions: For Research Use only

Handling

Format: Liquid

Concentration: Lot specific

Buffer: 20 mM sodium phosphate, 150 mM sodium chloride, 50 % glycerol, pH 7.5, 3 mM sodium azide.

Preservative: Sodium azide

Precaution of Use: This product contains Sodium azide: a POISONOUS AND HAZARDOUS SUBSTANCE which should be handled by trained staff only.

Handling Advice: Minimize freezing and thawing.

Storage: -20 °C

Storage Comment: Aliquot and store at -20°C. Avoid freeze-thaw cycles.

Images

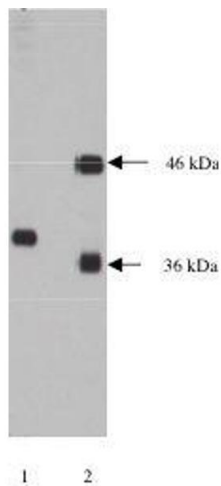


Image 1.