



[Go to Product page](#)

Datasheet for ABIN2017584
anti-GLN1 antibody (AA 300-350)

2 Images

Overview

Quantity:	100 µg
Target:	GLN1
Binding Specificity:	AA 300-350
Reactivity:	Human, Mouse, Rat
Host:	Rabbit
Clonality:	Polyclonal
Application:	Western Blotting (WB), Immunohistochemistry (IHC), ELISA

Product Details

Immunogen:	KLH-coupled synthetic peptide from within AA 300-350 of Human Glutamine Synthetase protein .
Isotype:	IgG
Specificity:	Rabbit Anti-Glutamine Synthetase Polyclonal Antibody detects endogenous levels of human, mouse and rat Glutamine Synthetase protein.
Purification:	Immunoaffinity chromatography

Target Details

Target:	GLN1
Alternative Name:	Glutamine Synthetase (GLN1 Products)
Background:	Glutamine synthetase is an enzyme that plays an essential role in the metabolism of nitrogen by catalyzing the condensation of glutamate and ammonia to form glutamine. Glutamine

Target Details

synthetase activity is a useful marker for astrocytes and an important differentiation feature in retina. It is also considered to be a key enzyme in the recycling of the neurotransmitter glutamate. Rabbit Anti-Glutamine Synthetase Polyclonal Antibody is developed in rabbit using a KLH-coupled synthetic peptide from within residues 300-350 of human Glutamine Synthetase protein (Swiss Prot: P15104).

Pathways: [Positive Regulation of Peptide Hormone Secretion](#)

Application Details

Application Notes: Working concentrations for specific applications should be determined by the investigator. The appropriate concentrations may be affected by secondary antibody affinity, antigen concentration, the sensitivity of the method of detection, temperature, the length of the incubations, and other factors. The suitability of this antibody for applications other than those listed below has not been determined. The following concentration ranges are recommended starting points for this product.

ELISA: 0.05-0.2 µg/mL

Western blot: 0.5-1 µg/mL Immunohistochemistry: 5-10 µg/mL Other Applications: user-optimized

Restrictions: For Research Use only

Handling

Format: Lyophilized

Buffer: PBS, pH 7.4, containing 0.02 % sodium azide.

Preservative: Sodium azide

Precaution of Use: **WARNING:** Reagents contain sodium azide. Sodium azide is very toxic if ingested or inhaled. Avoid contact with skin, eyes, or clothing. Wear eye or face protection when handling. If skin or eye contact occurs, wash with copious amounts of water. If ingested or inhaled, contact a physician immediately. Sodium azide yields toxic hydrazoic acid under acidic conditions. Dilute azide-containing compounds in running water before discarding to avoid accumulation of potentially explosive deposits in lead or copper plumbing.

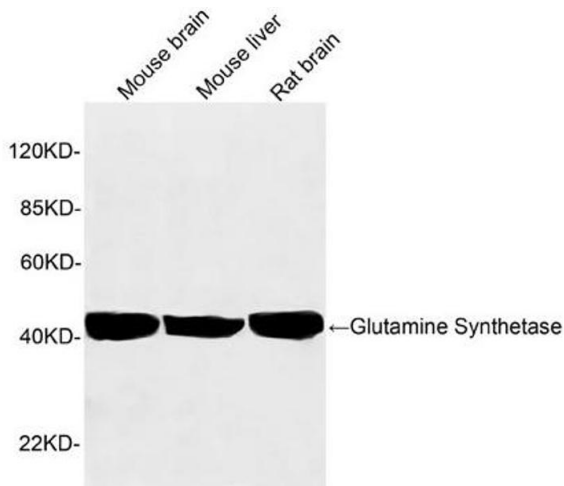
Storage: 4 °C/-20 °C

Storage Comment: The antibody is stable in lyophilized form if stored at -20°C or below. The reconstituted antibody

Handling

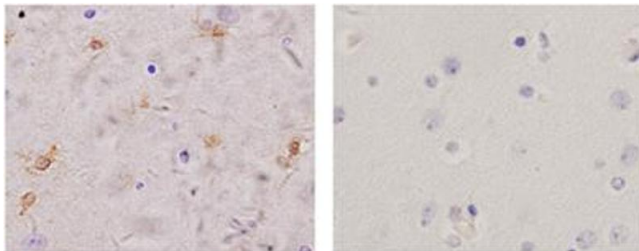
can be stored for 2-3 weeks at 2-8°C. For long term storage, aliquot and store at -20°C or below.
Avoid repeated freezing and thawing cycles.

Images



Western Blotting

Image 1. Western blot analysis of tissue lysates using 1 µg/mL Rabbit Anti-Glutamine Synthetase Polyclonal Antibody (ABIN398821). The signal was developed with IRDye™ 800 Conjugated Goat Anti-Rabbit IgG.



Immunohistochemistry

Image 2. Immunohistochemistry analysis of human brain tissue slide (Paraffin embedded) using Rabbit Anti-Glutamine Synthetase Polyclonal Antibody (Left, ABIN398821) and Purified Rabbit IgG (Whole molecule) Control (Right, ABIN398653).