



Datasheet for ABIN202040  
**anti-RBM8A antibody (N-Term)**



[Go to Product page](#)

2 Images

Overview

Quantity:	100 µL
Target:	RBM8A
Binding Specificity:	N-Term
Reactivity:	Human, Rat, Mouse, Zebrafish (Danio rerio), Cow, Dog, Horse, Xenopus laevis, Pig, Rabbit, Monkey
Host:	Rabbit
Clonality:	Polyclonal
Conjugate:	This RBM8A antibody is un-conjugated
Application:	Western Blotting (WB), Immunohistochemistry (IHC), Immunohistochemistry (Paraffin-embedded Sections) (IHC (p))

Product Details

Immunogen:	Synthetic peptide from N-Terminus of human RBM8A (Q9Y5S9, NP_005096). Percent identity by BLAST analysis: Human, Chimpanzee, Gibbon, Marmoset, Mouse, Rat, Elephant, Bovine, Rabbit, Horse, Pig, Opossum, Zebra finch, Xenopus, Sablefish, Pufferfish, Zebrafish (100%), Trout, Salmon, Pike (92%), Smelt, Stickleback, Medaka (85%), Galago, Dog (82%).  Type of Immunogen: Synthetic peptide
Isotype:	IgG
Specificity:	Human RBM8A
Predicted Reactivity:	Percent identity by BLAST analysis: Human, Mouse, Rat, Bovine, Horse, Pig, Zebrafish (100%)

## Product Details

---

Dog, Rabbit (82%).

Purification: Protein A purified

## Target Details

---

Target: RBM8A

Alternative Name: RBM8A / Y14 ([RBM8A Products](#))

Background: Name/Gene ID: RBM8A

Synonyms: RBM8A, Binder of OVCA1-1, BOV-1A, C1DELq21.1, BOV-1B, BOV-1, DEL1q21.1, MDS014, Ribonucleoprotein RBM8A, Ribonucleoprotein RBM8, RNA-binding motif protein 8A, RNA-binding protein Y14, TAR, Y14, ZRNP1, RBM8, RBM8B, RNA binding motif protein 8, RNA binding motif protein 8A, RNA-binding protein 8A, BOV-1C, ZNRP, RNA binding motif protein 8B

Gene ID: 9939

NCBI Accession: [NP\\_005096](#)

UniProt: [Q9Y5S9](#)

## Application Details

---

Application Notes: Approved: IHC, IHC-P, WB (1.25 µg/mL)

Comment: Target Species of Antibody: Human

Restrictions: For Research Use only

## Handling

---

Format: Lyophilized

Reconstitution: After adding water, will consist of PBS buffer with 2 % sucrose

Concentration: Lot specific

Buffer: Lyophilized from PBS with 2 % sucrose

Handling Advice: Avoid repeat freeze-thaw cycles.

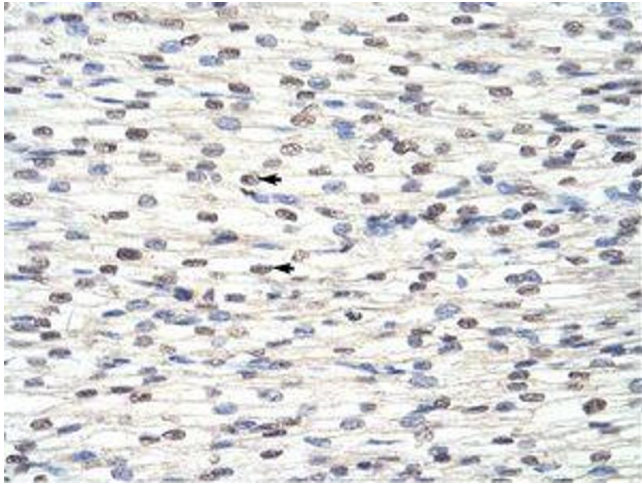
Storage: 4 °C, -20 °C

Storage Comment: Long term: -20°C, the use of 50% glycerol is recommended if storing aliquots in -20°C for long term use (up to 1 year)

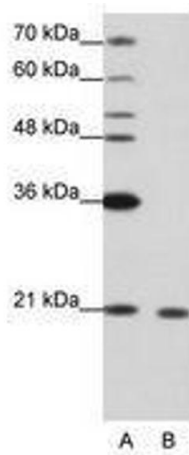
## Handling

Short term (less than 1 week): 4°C. Avoid freeze-thaw cycles.

## Images



**Image 1.**



**Image 2.**