



[Go to Product page](#)

Datasheet for ABIN202044  
**anti-CPHX antibody (N-Term)**

1 Image

Overview

Quantity:	100 µL
Target:	CPHX
Binding Specificity:	N-Term
Reactivity:	Mouse
Host:	Rabbit
Clonality:	Polyclonal
Conjugate:	This CPHX antibody is un-conjugated
Application:	Western Blotting (WB)

Product Details

Immunogen:	Synthetic peptide from N-Terminus of mouse Cphx1 (Q8BX39, NP_780551). Percent identity by BLAST analysis: Mouse (100%).  Type of Immunogen: Synthetic peptide
Isotype:	IgG
Specificity:	Mouse CPHX
Predicted Reactivity:	Percent identity by BLAST analysis:
Purification:	Protein A purified

Target Details

Target:	CPHX
---------	------

## Target Details

---

Alternative Name: CPHX ([CPHX Products](#))

Background: Name/Gene ID: Cphx

Synonyms: Cphx, AU023336, Eso-1, RGD1565219, AU019881, C80129

Gene ID: 502042

NCBI Accession: [NP\\_780551](#)

## Application Details

---

Application Notes: Approved: WB (5 µg/mL)

Comment: Target Species of Antibody: Mouse

Restrictions: For Research Use only

## Handling

---

Format: Lyophilized

Reconstitution: After adding water, will consist of PBS buffer with 2 % sucrose

Concentration: Lot specific

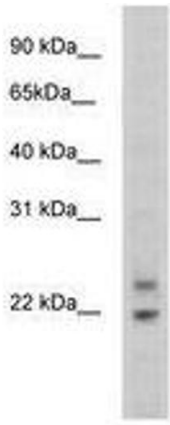
Buffer: Lyophilized from PBS with 2 % sucrose

Handling Advice: Avoid repeat freeze-thaw cycles.

Storage: 4 °C, -20 °C

Storage Comment: Long term: -20°C, the use of 50% glycerol is recommended if storing aliquots in -20°C for long term use (up to 1 year)

Short term (less than 1 week): 4°C. Avoid freeze-thaw cycles.



**Image 1.**