



[Go to Product page](#)

Datasheet for ABIN202046
anti-RAX2 antibody (N-Term)

1 Image

Overview

Quantity:	100 µL
Target:	RAX2
Binding Specificity:	N-Term
Reactivity:	Human, Dog
Host:	Rabbit
Clonality:	Polyclonal
Conjugate:	This RAX2 antibody is un-conjugated
Application:	Western Blotting (WB)

Product Details

Immunogen:	Synthetic peptide from N-Terminus of human RAX2 (Q96IS3, NP_116142). Percent identity by BLAST analysis: Human, Chimpanzee, Gorilla, Gibbon, Marmoset (100%), Monkey, Galago, Bovine (92%), Pig (85%). Type of Immunogen: Synthetic peptide
Isotype:	IgG
Specificity:	Human RAX2 / RAXL1
Predicted Reactivity:	Percent identity by BLAST analysis: Human, Chimpanzee, Gorilla (100%) Monkey, Bovine (92%) Dog (84%).
Purification:	Protein A purified

Target Details

Target:	RAX2
Alternative Name:	RAXL1 / RAX2 (RAX2 Products)
Background:	Name/Gene ID: RAX2 Synonyms: RAX2, QRX, RAXL1, ARMD6, CORD11
Gene ID:	84839
NCBI Accession:	NP_116142
UniProt:	Q96IS3

Application Details

Application Notes:	Approved: WB (1.25 µg/mL)
Comment:	Target Species of Antibody: Human
Restrictions:	For Research Use only

Handling

Format:	Lyophilized
Reconstitution:	After adding water, will consist of PBS buffer with 2 % sucrose
Concentration:	Lot specific
Buffer:	Lyophilized from PBS with 2 % sucrose
Handling Advice:	Avoid repeat freeze-thaw cycles.
Storage:	4 °C, -20 °C
Storage Comment:	Long term: -20°C, the use of 50% glycerol is recommended if storing aliquots in -20°C for long term use (up to 1 year) Short term (less than 1 week): 4°C. Avoid freeze-thaw cycles.

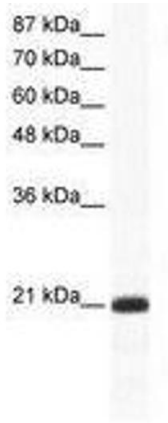


Image 1.