



Datasheet for ABIN202049  
**anti-TBPL1 antibody (AA 88-137)**



[Go to Product page](#)

2 Images

Overview

Quantity:	100 µL
Target:	TBPL1
Binding Specificity:	AA 88-137
Reactivity:	Human, Mouse, Rat, Monkey, Dog, Cow, Rabbit, Horse, Guinea Pig, Pig, Bat, Chicken, Hamster
Host:	Rabbit
Clonality:	Polyclonal
Conjugate:	This TBPL1 antibody is un-conjugated
Application:	Western Blotting (WB), Immunohistochemistry (IHC), Immunohistochemistry (Paraffin-embedded Sections) (IHC (p))

Product Details

Immunogen:	Synthetic peptide located between aa88-137 of human TBPL1 (P62380, NP_004856). Percent identity by BLAST analysis: Human, Chimpanzee, Gorilla, Orangutan, Gibbon, Monkey, Galago, Marmoset, Mouse, Rat, Hamster, Elephant, Panda, Dog, Bovine, Bat, Rabbit, Horse, Pig, Opossum, Guinea pig, Turkey, Zebra finch, Chicken (100%), Platypus, Xenopus, Catfish, Zebrafish (92%).  Type of Immunogen: Synthetic peptide
Isotype:	IgG
Specificity:	Human TBPL1
Predicted Reactivity:	Percent identity by BLAST analysis: Human, Mouse, Rat, Dog, Bovine, Horse, Guinea pig,

## Product Details

---

Chicken (100%) Xenopus, Zebrafish (92%).

Purification: Protein A purified

## Target Details

---

Target: TBPL1

Alternative Name: TBPL1 / TRF2 ([TBPL1 Products](#))

Background: Name/Gene ID: TBPL1

Synonyms: TBPL1, 21-kDa TBP-like protein, 21 kDa TBP-like protein, MGC:8389, TBP-related protein, TLP21, MGC:9620, TRF2, STUD, TBP-like 1, TBP-related factor 2, TLF, TBP-like factor, TBP-like protein 1, TLP

Gene ID: 9519

NCBI Accession: [NP\\_004856](#)

UniProt: [P62380](#)

## Application Details

---

Application Notes: Approved: IHC, IHC-P, WB (1.25 µg/mL)

Comment: Target Species of Antibody: Human

Restrictions: For Research Use only

## Handling

---

Format: Lyophilized

Reconstitution: After adding water, will consist of PBS buffer with 2 % sucrose

Concentration: Lot specific

Buffer: Lyophilized from PBS with 2 % sucrose

Handling Advice: Avoid repeat freeze-thaw cycles.

Storage: 4 °C, -20 °C

Storage Comment: Long term: -20°C, the use of 50% glycerol is recommended if storing aliquots in -20°C for long term use (up to 1 year)

Short term (less than 1 week): 4°C. Avoid freeze-thaw cycles.

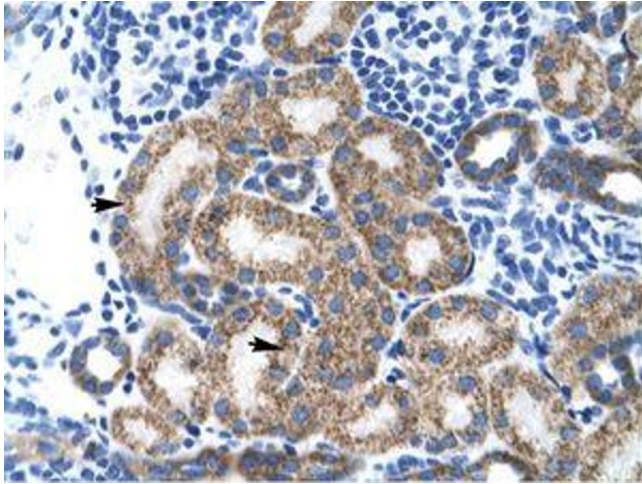


Image 1.



Image 2.