



[Go to Product page](#)

Datasheet for ABIN202059

anti-RGS16 antibody (C-Term)

1 Image

Overview

Quantity:	100 µL
Target:	RGS16
Binding Specificity:	C-Term
Reactivity:	Human, Mouse, Rat, Monkey, Dog, Pig, Hamster
Host:	Rabbit
Clonality:	Polyclonal
Conjugate:	This RGS16 antibody is un-conjugated
Application:	Western Blotting (WB)

Product Details

Immunogen:	Synthetic peptide from C-Terminus of human RGS16 (Q5VYN9, NP_002919). Percent identity by BLAST analysis: Human, Gorilla, Gibbon, Monkey, Galago, Marmoset, Mouse, Rat, Hamster, Panda, Dog, Pig (100%), Bat, Horse (92%), Elephant, Bovine (91%). Type of Immunogen: Synthetic peptide
Isotype:	IgG
Specificity:	Human RGS16
Predicted Reactivity:	Percent identity by BLAST analysis: Human, Mouse, Rat, Pig (100%) Bovine (91%).
Purification:	Protein A purified

Target Details

Target:	RGS16
Alternative Name:	RGS16 (RGS16 Products)
Background:	Name/Gene ID: RGS16 Family: Regulator of G-protein signalling Synonyms: RGS16, A28-RGS14, A28-RGS14P, Retinal-specific RGS, RGS-R, HRGS-r
Gene ID:	6004
NCBI Accession:	NP_002919
UniProt:	O15492
Pathways:	Myometrial Relaxation and Contraction, Regulation of G-Protein Coupled Receptor Protein Signaling

Application Details

Application Notes:	Approved: WB (1 µg/mL)
Comment:	Target Species of Antibody: Human
Restrictions:	For Research Use only

Handling

Format:	Lyophilized
Reconstitution:	After adding water, will consist of PBS buffer with 2 % sucrose
Concentration:	Lot specific
Buffer:	Lyophilized from PBS with 2 % sucrose
Handling Advice:	Avoid repeat freeze-thaw cycles.
Storage:	4 °C, -20 °C
Storage Comment:	Long term: -20°C, the use of 50% glycerol is recommended if storing aliquots in -20°C for long term use (up to 1 year) Short term (less than 1 week): 4°C. Avoid freeze-thaw cycles.

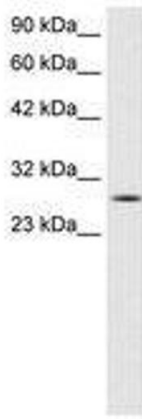


Image 1.