



[Go to Product page](#)

Datasheet for ABIN202095

anti-Claudin 15 antibody (C-Term)

1 Image

Overview

Quantity:	100 µL
Target:	Claudin 15 (CLDN15)
Binding Specificity:	C-Term
Reactivity:	Human, Cow
Host:	Rabbit
Clonality:	Polyclonal
Conjugate:	This Claudin 15 antibody is un-conjugated
Application:	Western Blotting (WB)

Product Details

Immunogen:	Synthetic peptide from C-Terminus of human CLDN15 (P56746, NP_055158). Percent identity by BLAST analysis: Human, Gorilla, Gibbon (100%), Marmoset (92%). Type of Immunogen: Synthetic peptide
Isotype:	IgG
Specificity:	Human CLDN15 / Claudin-15
Predicted Reactivity:	Percent identity by BLAST analysis: Human (100%).
Purification:	Protein A purified

Target Details

Target:	Claudin 15 (CLDN15)
---------	---------------------

Target Details

Alternative Name: CLDN15 / Claudin 15 ([CLDN15 Products](#))

Background: Name/Gene ID: CLDN15

Family: Claudin

Synonyms: CLDN15, Claudin 15, Claudin-15

Gene ID: 24146

NCBI Accession: [NP_055158](#)

UniProt: [P56746](#)

Pathways: [Cell-Cell Junction Organization](#), [Hepatitis C](#)

Application Details

Application Notes: Approved: WB (5 µg/mL)

Comment: Target Species of Antibody: Human

Restrictions: For Research Use only

Handling

Format: Lyophilized

Reconstitution: After adding water, will consist of PBS buffer with 2 % sucrose

Concentration: Lot specific

Buffer: Lyophilized from PBS with 2 % sucrose

Handling Advice: Avoid repeat freeze-thaw cycles.

Storage: 4 °C, -20 °C

Storage Comment: Long term: -20°C, the use of 50% glycerol is recommended if storing aliquots in -20°C for long term use (up to 1 year)

Short term (less than 1 week): 4°C. Avoid freeze-thaw cycles.

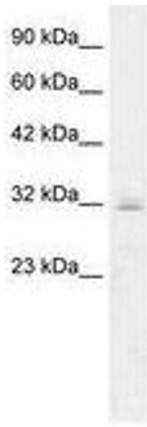


Image 1.