



[Go to Product page](#)

Datasheet for ABIN202103

anti-KCTD6 antibody (AA 72-121)

1 Image

Overview

Quantity:	100 µL
Target:	KCTD6
Binding Specificity:	AA 72-121
Reactivity:	Human, Mouse, Rat, Cow, Dog, Guinea Pig, Horse, Rabbit, Zebrafish (Danio rerio), Bat, Chicken, Monkey, Pig
Host:	Rabbit
Clonality:	Polyclonal
Conjugate:	This KCTD6 antibody is un-conjugated
Application:	Western Blotting (WB)

Product Details

Immunogen:	Synthetic peptide located between aa72-121 of human KCTD6 (Q8TCA6, NP_699162). Percent identity by BLAST analysis: Human, Chimpanzee, Gorilla, Gibbon, Monkey, Galago, Marmoset, Mouse, Rat, Elephant, Panda, Dog, Bovine, Bat, Rabbit, Horse, Pig, Opossum, Guinea pig, Turkey, Zebra finch, Chicken, Platypus (100%), Lizard, Xenopus, Stickleback (92%), Catfish, Salmon, Pufferfish, Zebrafish (84%). Type of Immunogen: Synthetic peptide
Isotype:	IgG
Specificity:	Human KCTD6
Predicted Reactivity:	Percent identity by BLAST analysis: Human, Mouse, Rat, Bovine, Chicken (100%) Zebrafish

Product Details

(84%).

Purification: Protein A purified

Target Details

Target: KCTD6

Alternative Name: KCTD6 ([KCTD6 Products](#))

Background: Name/Gene ID: KCTD6
Subfamily: Transient Receptor Potential Channel
Family: Ion Channel

Synonyms: KCTD6, KCASH3

Gene ID: 200845

NCBI Accession: [NP_699162](#)

UniProt: [Q8NC69](#)

Application Details

Application Notes: Approved: WB (0.62 µg/mL)

Comment: Target Species of Antibody: Human

Restrictions: For Research Use only

Handling

Format: Lyophilized

Reconstitution: After adding water, will consist of PBS buffer with 2 % sucrose

Concentration: Lot specific

Buffer: Lyophilized from PBS with 2 % sucrose

Handling Advice: Avoid repeat freeze-thaw cycles.

Storage: 4 °C,-20 °C

Storage Comment: Long term: -20°C, the use of 50% glycerol is recommended if storing aliquots in -20°C for long term use (up to 1 year)
Short term (less than 1 week): 4°C. Avoid freeze-thaw cycles.

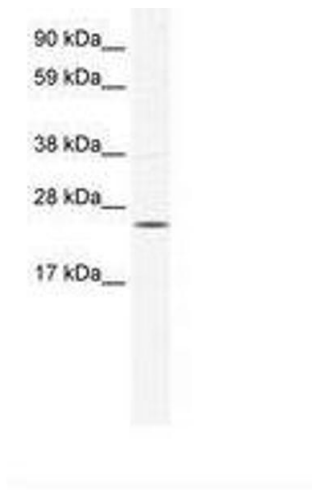


Image 1.