

Datasheet for ABIN202150  
**anti-HOXD12 antibody (N-Term)**



[Go to Product page](#)

2 Images

Overview

Quantity:	100 µL
Target:	HOXD12
Binding Specificity:	N-Term
Reactivity:	Human, Mouse, Rat, Dog, Cow, Guinea Pig, Rabbit, Horse, Pig, Bat, Monkey
Host:	Rabbit
Clonality:	Polyclonal
Conjugate:	This HOXD12 antibody is un-conjugated
Application:	Western Blotting (WB), Immunohistochemistry (IHC), Immunohistochemistry (Paraffin-embedded Sections) (IHC (p))

Product Details

Immunogen:	Synthetic peptide from N-Terminus of human HOXD12 (P35452, NP_067016). Percent identity by BLAST analysis: Human, Chimpanzee, Gorilla, Gibbon, Monkey, Galago, Mouse, Rat, Elephant, Panda, Dog, Bovine, Bat, Rabbit, Horse, Pig, Guinea pig (100%), Hamster, Opossum, Turkey, Chicken (92%), Platypus (85%).  Type of Immunogen: Synthetic peptide
Isotype:	IgG
Specificity:	Human HOXD12
Predicted Reactivity:	Percent identity by BLAST analysis: Human, Rat, Dog, Bovine, Rabbit, Horse, Pig, Guinea pig (100%).

## Product Details

---

Purification: Protein A purified

## Target Details

---

Target: HOXD12

Alternative Name: HOXD12 ([HOXD12 Products](#))

Background: Name/Gene ID: HOXD12

Synonyms: HOXD12, Homeobox D12, Homeobox protein Hox-4H, Homeobox protein Hox-D12, Hox-4.7, mouse, homolog of, HOX4H, Homeo box D12

Gene ID: 3238

NCBI Accession: [NP\\_067016](#)

UniProt: [P35452](#)

## Application Details

---

Application Notes: Approved: IHC, IHC-P, WB (5 µg/mL)

Comment: Target Species of Antibody: Human

Restrictions: For Research Use only

## Handling

---

Format: Lyophilized

Reconstitution: After adding water, will consist of PBS buffer with 2 % sucrose

Concentration: Lot specific

Buffer: Lyophilized from PBS with 2 % sucrose

Handling Advice: Avoid repeat freeze-thaw cycles.

Storage: 4 °C, -20 °C

Storage Comment: Long term: -20°C, the use of 50% glycerol is recommended if storing aliquots in -20°C for long term use (up to 1 year)

Short term (less than 1 week): 4°C. Avoid freeze-thaw cycles.

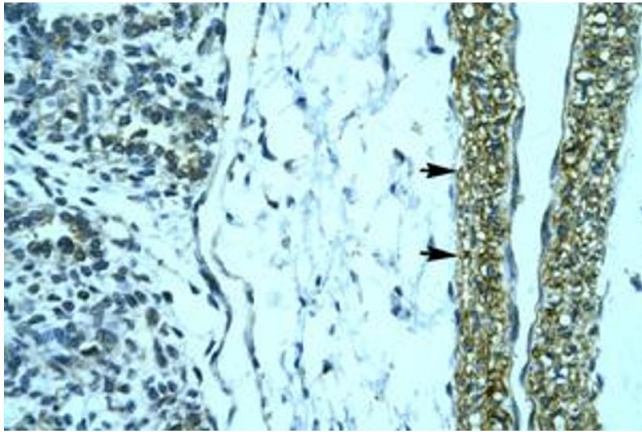


Image 1.

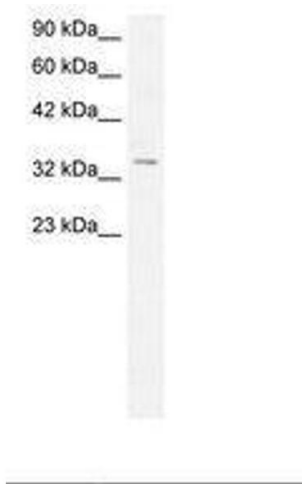


Image 2.