



[Go to Product page](#)

Datasheet for ABIN202164

anti-MORF4L2 antibody (AA 67-116)

2 Images

Overview

Quantity:	100 µL
Target:	MORF4L2
Binding Specificity:	AA 67-116
Reactivity:	Human, Mouse, Rat, Dog, Horse, Pig, Rabbit, Monkey, Bat
Host:	Rabbit
Clonality:	Polyclonal
Conjugate:	This MORF4L2 antibody is un-conjugated
Application:	Western Blotting (WB), Immunohistochemistry (IHC), Immunohistochemistry (Paraffin-embedded Sections) (IHC (p))

Product Details

Immunogen:	Synthetic peptide located between aa67-116 of human MORF4L2 (Q15014, NP_036418). Percent identity by BLAST analysis: Human, Chimpanzee, Gorilla, Orangutan, Monkey, Marmoset, Mouse, Rat, Elephant, Panda, Dog, Bat, Rabbit, Horse, Pig (100%), Bovine, Guinea pig (92%). Type of Immunogen: Synthetic peptide
Isotype:	IgG
Specificity:	Human MORF4L2
Predicted Reactivity:	Percent identity by BLAST analysis: Human, Mouse, Dog, Horse (100%) Bovine (92%).
Purification:	Protein A purified

Target Details

Target:	MORF4L2
Alternative Name:	MORF4L2 / MRGX (MORF4L2 Products)
Background:	Name/Gene ID: MORF4L2 Synonyms: MORF4L2, MRGX, Mortality factor 4 like 2, KIAA0026, MSL3-2 protein, MORF-related gene X protein, MORFL2, Protein MSL3-2
Gene ID:	9643
NCBI Accession:	NP_036418
UniProt:	Q15014
Pathways:	Regulation of Muscle Cell Differentiation

Application Details

Application Notes:	Approved: IHC, IHC-P, WB (0.2 µg/mL)
Comment:	Target Species of Antibody: Human
Restrictions:	For Research Use only

Handling

Format:	Lyophilized
Reconstitution:	After adding water, will consist of PBS buffer with 2 % sucrose
Concentration:	Lot specific
Buffer:	Lyophilized from PBS with 2 % sucrose
Handling Advice:	Avoid repeat freeze-thaw cycles.
Storage:	4 °C,-20 °C
Storage Comment:	Long term: -20°C, the use of 50% glycerol is recommended if storing aliquots in -20°C for long term use (up to 1 year) Short term (less than 1 week): 4°C. Avoid freeze-thaw cycles.

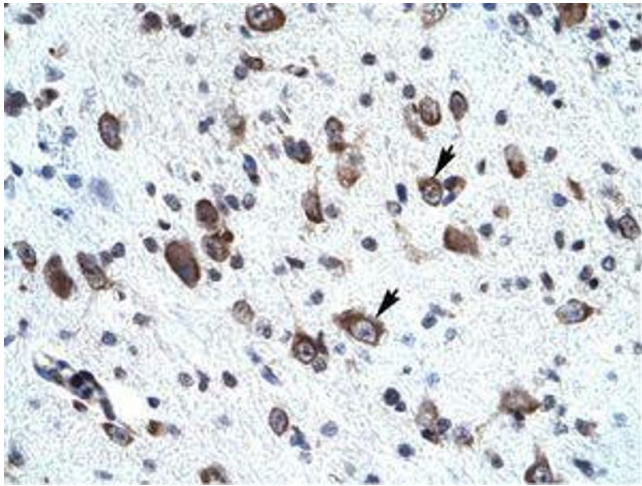


Image 1.

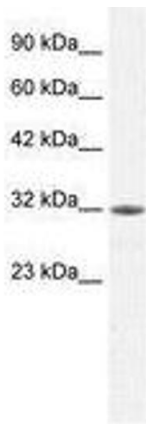


Image 2.