



[Go to Product page](#)

Datasheet for ABIN202173
anti-EXOSC7 antibody (AA 71-120)

2 Images

Overview

Quantity:	100 µL
Target:	EXOSC7
Binding Specificity:	AA 71-120
Reactivity:	Human, Rat, Mouse, Dog, Cow, Horse, Guinea Pig, Rabbit, Zebrafish (Danio rerio), Monkey
Host:	Rabbit
Clonality:	Polyclonal
Conjugate:	This EXOSC7 antibody is un-conjugated
Application:	Western Blotting (WB), Immunohistochemistry (IHC), Immunohistochemistry (Paraffin-embedded Sections) (IHC (p))

Product Details

Immunogen:	Synthetic peptide located between aa71-120 of human EXOSC7 (Q15024, NP_055819). Percent identity by BLAST analysis: Human, Chimpanzee, Gorilla, Gibbon, Monkey, Galago, Marmoset, Mouse, Rat, Dog, Bovine, Rabbit, Horse, Opossum, Guinea pig (100%), Elephant, Bat, Pig, Platypus, Stickleback (92%), Turkey, Chicken, Xenopus, Frog, Salmon, Pike (85%). Type of Immunogen: Synthetic peptide
Isotype:	IgG
Specificity:	Human EXOSC7
Predicted Reactivity:	Percent identity by BLAST analysis: Human, Mouse, Rat, Dog (100%) Pig (92%) Chicken, Xenopus (85%).

Product Details

Purification: Protein A purified

Target Details

Target: EXOSC7

Alternative Name: EXOSC7 ([EXOSC7 Products](#))

Background: Name/Gene ID: EXOSC7

Synonyms: EXOSC7, EAP1, HRrp42p, p8, Rrp42p, RRP42, Exosome component 7, KIAA0116

Gene ID: 23016

NCBI Accession: [NP_055819](#)

UniProt: [Q15024](#)

Application Details

Application Notes: Approved: IHC, IHC-P, WB (1.25 µg/mL)

Comment: Target Species of Antibody: Human

Restrictions: For Research Use only

Handling

Format: Lyophilized

Reconstitution: After adding water, will consist of PBS buffer with 2 % sucrose

Concentration: Lot specific

Buffer: Lyophilized from PBS with 2 % sucrose

Handling Advice: Avoid repeat freeze-thaw cycles.

Storage: 4 °C, -20 °C

Storage Comment: Long term: -20°C, the use of 50% glycerol is recommended if storing aliquots in -20°C for long term use (up to 1 year)

Short term (less than 1 week): 4°C. Avoid freeze-thaw cycles.

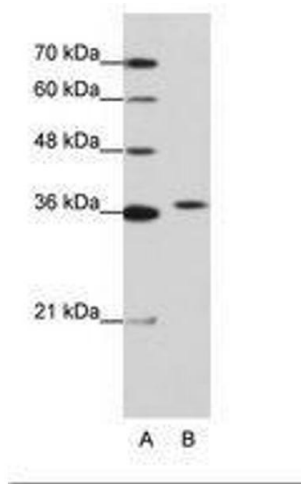


Image 1.

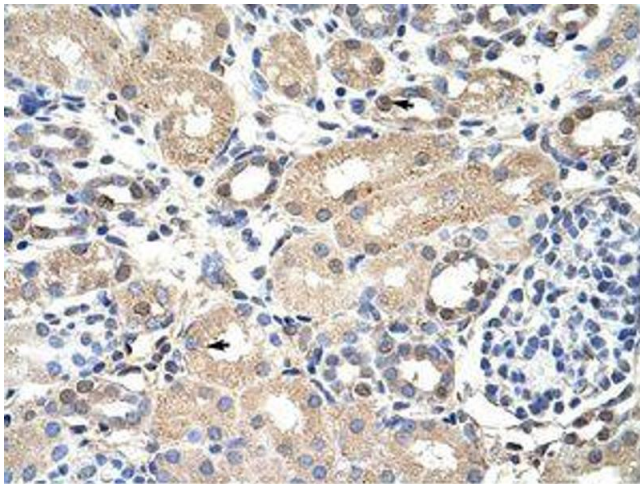


Image 2.