



[Go to Product page](#)

Datasheet for ABIN202192

## anti-MSX1 antibody (AA 72-121)

### 1 Image

#### Overview

Quantity:	100 µL
Target:	MSX1
Binding Specificity:	AA 72-121
Reactivity:	Human, Mouse, Rat, Cow, Dog, Pig, Monkey
Host:	Rabbit
Clonality:	Polyclonal
Conjugate:	This MSX1 antibody is un-conjugated
Application:	Western Blotting (WB)

#### Product Details

Immunogen:	Synthetic peptide located between aa72-121 of mouse MSX1 (P13297, NP_034965). Percent identity by BLAST analysis: Human, Chimpanzee, Gorilla, Orangutan, Gibbon, Baboon, Monkey, Marmoset, Mouse, Rat, Dog, Bovine, Pig (100%), Elephant (92%), Tamarin (91%), Galago (84%).  Type of Immunogen: Synthetic peptide
Isotype:	IgG
Specificity:	Human MSX1
Predicted Reactivity:	Percent identity by BLAST analysis: Human, Mouse, Rat, Dog, Bovine, Pig (100%).
Purification:	Protein A purified

## Target Details

---

Target:	MSX1
Alternative Name:	MSX1 ( <a href="#">MSX1 Products</a> )
Background:	Name/Gene ID: MSX1  Synonyms: MSX1, ECTD3, Homeobox protein MSX-1, HOX7, Msh homeo box 1, Homeobox 7, OFC5, STHAG1, Msh homeobox homolog 1, Homeobox protein Hox-7, HYD1, Msh homeobox 1, Msh homeobox 1-like protein
Gene ID:	4487
NCBI Accession:	<a href="#">NP_034965</a>
UniProt:	<a href="#">P28360</a>
Pathways:	<a href="#">Regulation of Muscle Cell Differentiation</a> , <a href="#">Positive Regulation of Response to DNA Damage Stimulus</a>

## Application Details

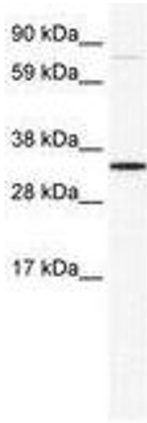
---

Application Notes:	Approved: WB (1.25 µg/mL)
Comment:	Target Species of Antibody: Mouse
Restrictions:	For Research Use only

## Handling

---

Format:	Lyophilized
Reconstitution:	After adding water, will consist of PBS buffer with 2 % sucrose
Concentration:	Lot specific
Buffer:	Lyophilized from PBS with 2 % sucrose
Handling Advice:	Avoid repeat freeze-thaw cycles.
Storage:	4 °C,-20 °C
Storage Comment:	Long term: -20°C, the use of 50% glycerol is recommended if storing aliquots in -20°C for long term use (up to 1 year) Short term (less than 1 week): 4°C. Avoid freeze-thaw cycles.



**Image 1.**