



[Go to Product page](#)

Datasheet for ABIN202195

anti-TCEA1 antibody (AA 112-161)

1 Image

Overview

Quantity:	100 µL
Target:	TCEA1
Binding Specificity:	AA 112-161
Reactivity:	Human, Mouse, Rat, Dog, Guinea Pig, Horse, Cow, Bat
Host:	Rabbit
Clonality:	Polyclonal
Conjugate:	This TCEA1 antibody is un-conjugated
Application:	Western Blotting (WB)

Product Details

Immunogen:	Synthetic peptide located between aa112-161 of mouse TCEA1 (P10711, NP_035671). Percent identity by BLAST analysis: Human, Gorilla, Gibbon, Galago, Mouse, Rat, Panda, Dog, Bovine, Bat, Horse, Guinea pig (100%), Marmoset, Elephant, Pig (92%). Type of Immunogen: Synthetic peptide
Isotype:	IgG
Specificity:	Human TCEA1
Predicted Reactivity:	Percent identity by BLAST analysis: Human, Mouse, Rat, Dog, Bovine, Horse, Guinea pig (100%) Pig (92%).
Purification:	Protein A purified

Target Details

Target:	TCEA1
Alternative Name:	TCEA1 / TFIIS (TCEA1 Products)
Background:	Name/Gene ID: TCEA1 Synonyms: TCEA1, GTF2S, SII, TCEA, TFIIS
Gene ID:	6917
NCBI Accession:	NP_035671
UniProt:	P23193

Application Details

Application Notes:	Approved: WB (1.25 µg/mL)
Comment:	Target Species of Antibody: Mouse
Restrictions:	For Research Use only

Handling

Format:	Lyophilized
Reconstitution:	After adding water, will consist of PBS buffer with 2 % sucrose
Concentration:	Lot specific
Buffer:	Lyophilized from PBS with 2 % sucrose
Handling Advice:	Avoid repeat freeze-thaw cycles.
Storage:	4 °C, -20 °C
Storage Comment:	Long term: -20°C, the use of 50% glycerol is recommended if storing aliquots in -20°C for long term use (up to 1 year) Short term (less than 1 week): 4°C. Avoid freeze-thaw cycles.

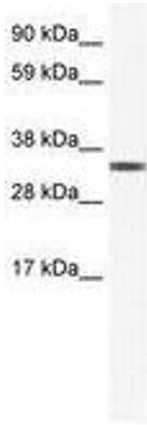


Image 1.