

Datasheet for ABIN202211  
**anti-RIMS3 antibody (C-Term)**

2 Images



[Go to Product page](#)

## Overview

Quantity:	100 µL
Target:	RIMS3
Binding Specificity:	C-Term
Reactivity:	Human, Mouse, Rat, Dog, Zebrafish (Danio rerio), Cow, Guinea Pig, Horse, Rabbit, Bat, Monkey, Pig
Host:	Rabbit
Clonality:	Polyclonal
Conjugate:	This RIMS3 antibody is un-conjugated
Application:	Western Blotting (WB), Immunohistochemistry (IHC), Immunohistochemistry (Paraffin-embedded Sections) (IHC (p))

## Product Details

Immunogen:	Synthetic peptide from C-Terminus of human RIMS3 (Q9UJD0, NP_055562). Percent identity by BLAST analysis: Human, Chimpanzee, Gorilla, Gibbon, Monkey, Galago, Marmoset, Mouse, Rat, Elephant, Panda, Dog, Bovine, Bat, Rabbit, Horse, Pig, Guinea pig, Stickleback, Zebrafish (100%), Opossum, Chicken, Platypus, Xenopus (92%), Zebra finch, Lizard (84%).  Type of Immunogen: Synthetic peptide
Isotype:	IgG
Specificity:	Human RIMS3
Predicted Reactivity:	Percent identity by BLAST analysis: Human, Mouse, Rat, Dog, Bovine, Rabbit, Pig, Zebrafish

## Product Details

---

(100%) Chicken (92%).

Purification: Protein A purified

## Target Details

---

Target: RIMS3

Alternative Name: RIMS3 ([RIMS3 Products](#))

Background: Name/Gene ID: RIMS3

Synonyms: RIMS3, KIAA0137, Rab-3-interacting molecule 3, NIM3, Rab-3 interacting molecule 3, RIM3, RIM3 gamma, KIAA0237, RIM 3

Gene ID: 9783

NCBI Accession: [NP\\_055562](#)

UniProt: [Q9UJD0](#)

Pathways: [Stem Cell Maintenance](#), [Synaptic Vesicle Exocytosis](#)

## Application Details

---

Application Notes: Approved: IHC, IHC-P, WB (1.25 µg/mL)

Comment: Target Species of Antibody: Human

Restrictions: For Research Use only

## Handling

---

Format: Lyophilized

Reconstitution: After adding water, will consist of PBS buffer with 2 % sucrose

Concentration: Lot specific

Buffer: Lyophilized from PBS with 2 % sucrose

Handling Advice: Avoid repeat freeze-thaw cycles.

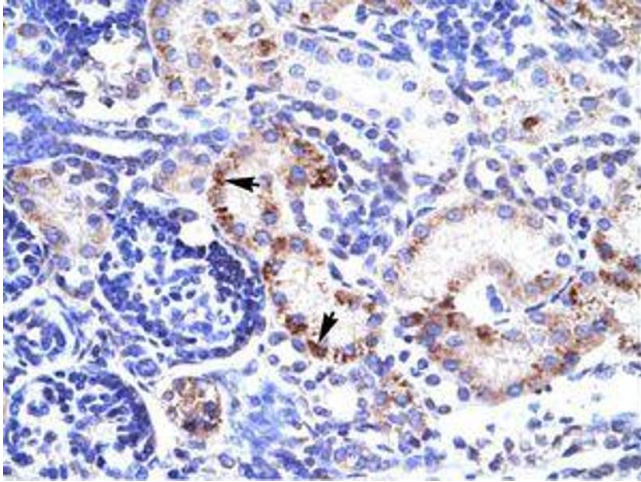
Storage: 4 °C,-20 °C

Storage Comment: Long term: -20°C, the use of 50% glycerol is recommended if storing aliquots in -20°C for long term use (up to 1 year)

## Handling

Short term (less than 1 week): 4°C. Avoid freeze-thaw cycles.

## Images



**Image 1.**



**Image 2.**