



[Go to Product page](#)

Datasheet for ABIN202215

## anti-USF1 antibody (AA 27-76)

### 1 Image

#### Overview

Quantity:	100 µL
Target:	USF1
Binding Specificity:	AA 27-76
Reactivity:	Human, Mouse, Rat, Cow, Dog, Horse, Rabbit, Guinea Pig, Pig, Monkey, Bat
Host:	Rabbit
Clonality:	Polyclonal
Conjugate:	This USF1 antibody is un-conjugated
Application:	Western Blotting (WB)

#### Product Details

Immunogen:	Synthetic peptide located between aa27-76 of human WHSC1 (P22415, NP_009053). Percent identity by BLAST analysis: Human, Chimpanzee, Gorilla, Orangutan, Gibbon, Monkey, Marmoset, Mouse, Rat, Elephant, Dog, Bovine, Bat, Rabbit, Horse, Pig, Opossum, Guinea pig (100%), Chicken, Xenopus (92%).  Type of Immunogen: Synthetic peptide
Isotype:	IgG
Specificity:	Human USF1
Predicted Reactivity:	Percent identity by BLAST analysis: Human, Mouse, Rat, Dog, Bovine, Rabbit, Pig, Guinea pig (100%) Chicken, Xenopus (92%).
Purification:	Protein A purified

## Target Details

---

Target:	USF1
Alternative Name:	USF1 / USF ( <a href="#">USF1 Products</a> )
Background:	Name/Gene ID: USF1  Synonyms: USF1, BHLHb11, FCHL, FCHL1, MLTFI, USF, UEF, HYPLIP1, MLTF, Upstream stimulatory factor 1
Gene ID:	7391
NCBI Accession:	<a href="#">NP_009053</a>
UniProt:	<a href="#">P22415</a>
Pathways:	<a href="#">Carbohydrate Homeostasis</a>

## Application Details

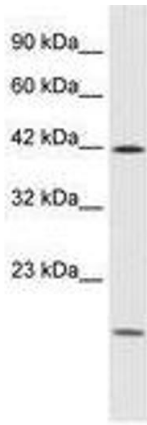
---

Application Notes:	Approved: WB (1.25 µg/mL)
Comment:	Target Species of Antibody: Human
Restrictions:	For Research Use only

## Handling

---

Format:	Lyophilized
Reconstitution:	After adding water, will consist of PBS buffer with 2 % sucrose
Concentration:	Lot specific
Buffer:	Lyophilized from PBS with 2 % sucrose
Handling Advice:	Avoid repeat freeze-thaw cycles.
Storage:	4 °C,-20 °C
Storage Comment:	Long term: -20°C, the use of 50% glycerol is recommended if storing aliquots in -20°C for long term use (up to 1 year)  Short term (less than 1 week): 4°C. Avoid freeze-thaw cycles.



**Image 1.**