

Datasheet for ABIN202222
anti-GIPC2 antibody (N-Term)



[Go to Product page](#)

2 Images

Overview

Quantity:	100 µL
Target:	GIPC2
Binding Specificity:	N-Term
Reactivity:	Human, Mouse, Monkey
Host:	Rabbit
Clonality:	Polyclonal
Conjugate:	This GIPC2 antibody is un-conjugated
Application:	Western Blotting (WB), Immunohistochemistry (IHC), Immunohistochemistry (Paraffin-embedded Sections) (IHC (p))

Product Details

Immunogen:	Synthetic peptide from N-Terminus of human GIPC2 (Q8TF65, NP_060125). Percent identity by BLAST analysis: Human, Gorilla, Gibbon, Monkey (100%), Rat (92%), Mouse (85%). Type of Immunogen: Synthetic peptide
Isotype:	IgG
Specificity:	Human GIPC2
Predicted Reactivity:	Percent identity by BLAST analysis: Human (100%) Rat (92%) Mouse (85%).
Purification:	Protein A purified

Target Details

Target:	GIPC2
Alternative Name:	GIPC2 (GIPC2 Products)
Background:	Name/Gene ID: GIPC2 Synonyms: GIPC2, SEMCAP-2, PDZ domain protein GIPC2, SEMCAP2
Gene ID:	54810
NCBI Accession:	NP_060125
UniProt:	Q8TF65

Application Details

Application Notes:	Approved: IHC, IHC-P, WB (1.25 µg/mL)
Comment:	Target Species of Antibody: Human
Restrictions:	For Research Use only

Handling

Format:	Lyophilized
Reconstitution:	Distilled water
Concentration:	Lot specific
Buffer:	Lyophilized from PBS with 2 % sucrose
Handling Advice:	Avoid repeat freeze-thaw cycles.
Storage:	4 °C, -20 °C
Storage Comment:	Long term: -20°C, the use of 50% glycerol is recommended if storing aliquots in -20°C for long term use (up to 1 year) Short term (less than 1 week): 4°C. Avoid freeze-thaw cycles.

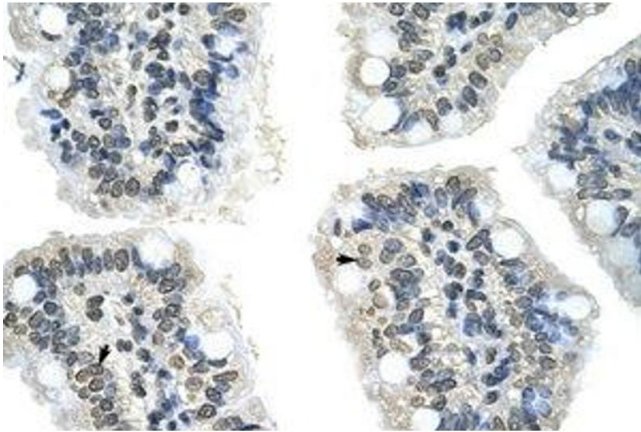


Image 1.

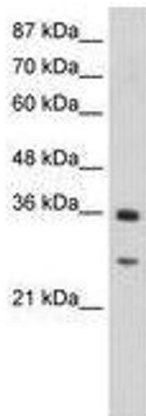


Image 2.