

Datasheet for ABIN202248  
**anti-CDK6 antibody (C-Term)**



[Go to Product page](#)

1 Image

## Overview

Quantity:	100 µL
Target:	CDK6
Binding Specificity:	C-Term
Reactivity:	Human, Mouse, Cow, Dog, Horse, Rabbit, Pig
Host:	Rabbit
Clonality:	Polyclonal
Conjugate:	This CDK6 antibody is un-conjugated
Application:	Western Blotting (WB)

## Product Details

Immunogen:	Synthetic peptide from C-Terminus of human CDK6 (Q00534, NP_001250). Percent identity by BLAST analysis: Human, Chimpanzee, Gorilla, Gibbon, Monkey, Galago (100%), Marmoset, Elephant, Guinea pig (92%), Panda, Dog, Bovine, Rabbit, Horse, Pig (84%), Mouse (76%).  Type of Immunogen: Synthetic peptide
Isotype:	IgG
Specificity:	Human Cdk6
Predicted Reactivity:	Percent identity by BLAST analysis: Human (100%) Dog, Bovine, Rabbit, Horse, Pig (84%).
Purification:	Protein A purified

## Target Details

Target:	CDK6
Alternative Name:	CDK6 ( <a href="#">CDK6 Products</a> )
Background:	Name/Gene ID: CDK6 Subfamily: CDC2/CDK Family: Protein Kinase  Synonyms: CDK6, CDKN6, Cell division protein kinase 6, Cyclin-dependent kinase 6, Crk2, PLSTIRE
Gene ID:	1021
NCBI Accession:	<a href="#">NP_001250</a>
UniProt:	<a href="#">Q00534</a>
Pathways:	<a href="#">Cell Division Cycle, Mitotic G1-G1/S Phases</a>

## Application Details

Application Notes:	Approved: WB (0.62 µg/mL)
Comment:	Target Species of Antibody: Human
Restrictions:	For Research Use only

## Handling

Format:	Lyophilized
Reconstitution:	After adding water, will consist of PBS buffer with 2 % sucrose
Concentration:	Lot specific
Buffer:	Lyophilized.
Handling Advice:	Avoid repeat freeze-thaw cycles.
Storage:	4 °C,-20 °C
Storage Comment:	Long term: -20°C, the use of 50% glycerol is recommended if storing aliquots in -20°C for long term use (up to 1 year) Short term (less than 1 week): 4°C. Avoid freeze-thaw cycles.

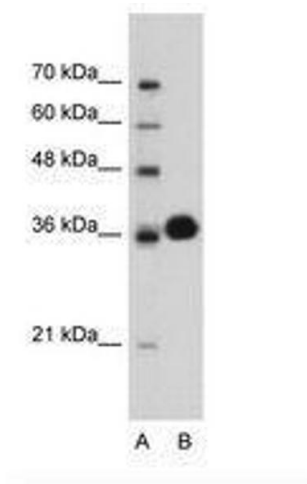


Image 1.