



[Go to Product page](#)

Datasheet for ABIN202254

## anti-GNB1L antibody (C-Term)

### 3 Images

#### Overview

Quantity:	100 µL
Target:	GNB1L
Binding Specificity:	C-Term
Reactivity:	Human, Mouse, Rat, Monkey
Host:	Rabbit
Clonality:	Polyclonal
Conjugate:	This GNB1L antibody is un-conjugated
Application:	Western Blotting (WB), Immunohistochemistry (IHC), Immunohistochemistry (Paraffin-embedded Sections) (IHC (p))

#### Product Details

Immunogen:	Synthetic peptide from C-Terminus of human GNB1L (Q9BYB4, NP_443730). Percent identity by BLAST analysis: Human, Chimpanzee, Gorilla, Gibbon, Monkey, Marmoset, Mouse, Rat (100%), Galago, Rabbit, Guinea pig (91%), Bat (84%).  Type of Immunogen: Synthetic peptide
Isotype:	IgG
Specificity:	Human GNB1L
Predicted Reactivity:	Percent identity by BLAST analysis: Human, Mouse, Rat (100%) Rabbit, Guinea pig (91%).
Purification:	Protein A purified

## Target Details

---

Target: GNB1L

Alternative Name: GNB1L / FKSG1 ([GNB1L Products](#))

Background: Name/Gene ID: GNB1L

Synonyms: GNB1L, DGCRK3, FKSG1, GY2, WDVCF, WDR14, KIAA1645

Gene ID: 54584

NCBI Accession: [NP\\_443730](#)

UniProt: [Q9BYB4](#)

## Application Details

---

Application Notes: Approved: IHC, IHC-P, WB (2.5 µg/mL)

Comment: Target Species of Antibody: Human

Restrictions: For Research Use only

## Handling

---

Format: Lyophilized

Reconstitution: After adding water, will consist of PBS buffer with 2 % sucrose

Concentration: Lot specific

Buffer: Lyophilized from PBS with 2 % sucrose

Handling Advice: Avoid repeat freeze-thaw cycles.

Storage: 4 °C, -20 °C

Storage Comment: Long term: -20°C, the use of 50% glycerol is recommended if storing aliquots in -20°C for long term use (up to 1 year)

Short term (less than 1 week): 4°C. Avoid freeze-thaw cycles.

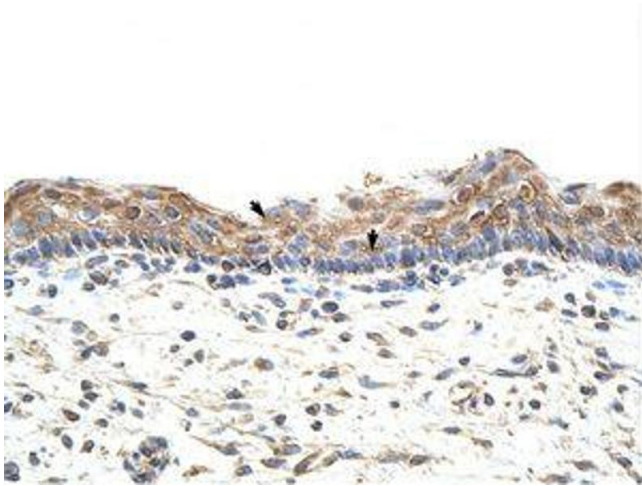


Image 1.

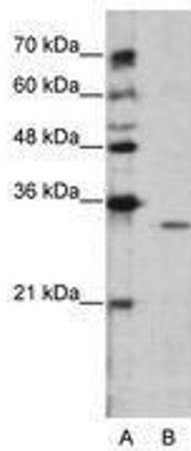


Image 2.

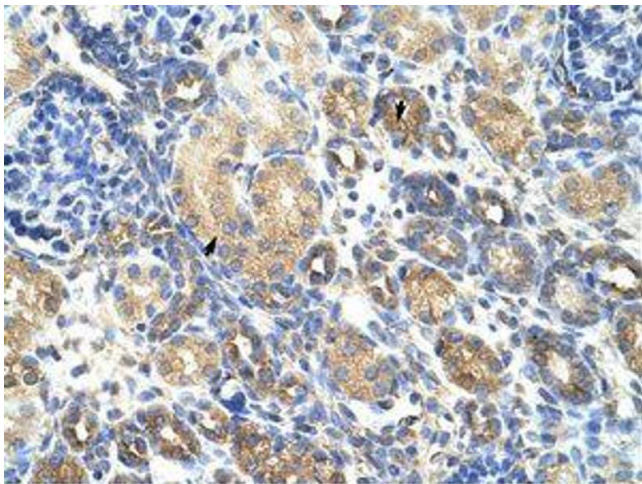


Image 3.