



[Go to Product page](#)

Datasheet for ABIN202255  
**anti-DLX2 antibody (N-Term)**

2 Images

Overview

Quantity:	100 µL
Target:	DLX2
Binding Specificity:	N-Term
Reactivity:	Human, Cow, Guinea Pig
Host:	Rabbit
Clonality:	Polyclonal
Conjugate:	This DLX2 antibody is un-conjugated
Application:	Western Blotting (WB), Immunohistochemistry (IHC), Immunohistochemistry (Paraffin-embedded Sections) (IHC (p))

Product Details

Immunogen:	Synthetic peptide from N-Terminus of human DLX2 (Q07687, NP_004396). Percent identity by BLAST analysis: Human, Guinea pig (100%), Gorilla, Gibbon, Marmoset, Mouse, Dog (92%), Bovine (86%), Monkey (85%).  Type of Immunogen: Synthetic peptide
Isotype:	IgG
Specificity:	Human Dlx2
Predicted Reactivity:	Percent identity by BLAST analysis: Human (100%) Mouse (92%) Bovine (86%).
Purification:	Protein A purified

## Target Details

---

Target:	DLX2
Alternative Name:	DLX2 ( <a href="#">DLX2 Products</a> )
Background:	Name/Gene ID: DLX2  Synonyms: DLX2, Distal-less homeo box 2, Distal-less homeobox 2, TES1, Homeobox protein DLX-2, TES-1
Gene ID:	1746
NCBI Accession:	<a href="#">NP_004396</a>
UniProt:	<a href="#">Q07687</a>

## Application Details

---

Application Notes:	Approved: IHC, IHC-P, WB (1.25 µg/mL)
Comment:	Target Species of Antibody: Human
Restrictions:	For Research Use only

## Handling

---

Format:	Lyophilized
Reconstitution:	After adding water, will consist of PBS buffer with 2 % sucrose
Concentration:	Lot specific
Buffer:	Lyophilized from PBS with 2 % sucrose
Handling Advice:	Avoid repeat freeze-thaw cycles.
Storage:	4 °C, -20 °C
Storage Comment:	Long term: -20°C, the use of 50% glycerol is recommended if storing aliquots in -20°C for long term use (up to 1 year)  Short term (less than 1 week): 4°C. Avoid freeze-thaw cycles.

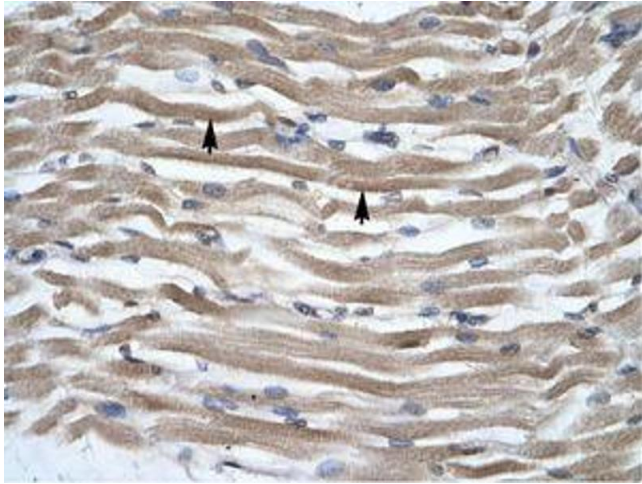


Image 1.

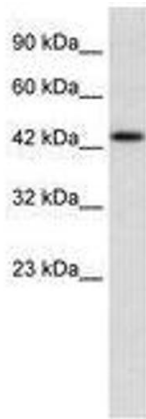


Image 2.