

Datasheet for ABIN202269
anti-SHOX2 antibody (AA 180-229)[Go to Product page](#)

1 Image

Overview

Quantity:	100 µL
Target:	SHOX2
Binding Specificity:	AA 180-229
Reactivity:	Human, Rat, Mouse, Cow, Dog, Guinea Pig, Zebrafish (Danio rerio), Horse, Rabbit, Monkey, Pig
Host:	Rabbit
Clonality:	Polyclonal
Conjugate:	This SHOX2 antibody is un-conjugated
Application:	Western Blotting (WB)

Product Details

Immunogen:	Synthetic peptide located between aa180-229 of human SHOX2 (O60902, NP_006875). Percent identity by BLAST analysis: Human, Chimpanzee, Gorilla, Monkey, Marmoset, Mouse, Rat, Dog, Bovine, Rabbit, Horse, Pig, Opossum, Guinea pig, Platypus, Zebrafish (100%), Zebra finch, Xenopus (92%). Type of Immunogen: Synthetic peptide
Isotype:	IgG
Specificity:	Human SHOX2
Predicted Reactivity:	Percent identity by BLAST analysis: Human, Mouse, Rat, Dog, Bovine, Horse, Zebrafish (100%).
Purification:	Protein A purified

Target Details

Target:	SHOX2
Alternative Name:	SHOX2 (SHOX2 Products)
Background:	Name/Gene ID: SHOX2 Synonyms: SHOX2, Homeobox protein shotb, OG12X, OG12, Short stature homeobox 2, Homeobox protein Og12X, SHOT
Gene ID:	6474
NCBI Accession:	NP_006875
UniProt:	O60902
Pathways:	Regulation of Muscle Cell Differentiation, Skeletal Muscle Fiber Development

Application Details

Application Notes:	Approved: WB (2.5 µg/mL)
Comment:	Target Species of Antibody: Human
Restrictions:	For Research Use only

Handling

Format:	Lyophilized
Reconstitution:	After adding water, will consist of PBS buffer with 2 % sucrose
Concentration:	Lot specific
Buffer:	Lyophilized from PBS with 2 % sucrose
Handling Advice:	Avoid repeat freeze-thaw cycles.
Storage:	4 °C,-20 °C
Storage Comment:	Long term: -20°C, the use of 50% glycerol is recommended if storing aliquots in -20°C for long term use (up to 1 year) Short term (less than 1 week): 4°C. Avoid freeze-thaw cycles.

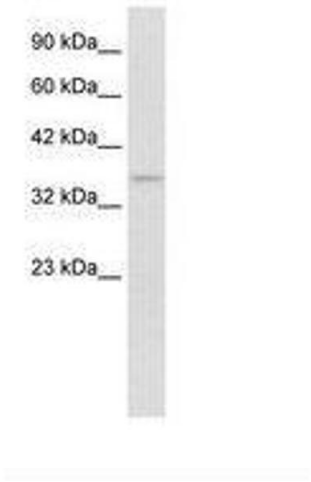


Image 1.