



Datasheet for ABIN202278  
**anti-FOSB antibody (AA 240-289)**



[Go to Product page](#)

2 Images

Overview

Quantity:	100 µL
Target:	FOSB
Binding Specificity:	AA 240-289
Reactivity:	Human, Cow, Horse, Monkey
Host:	Rabbit
Clonality:	Polyclonal
Conjugate:	This FOSB antibody is un-conjugated
Application:	Western Blotting (WB), Immunohistochemistry (IHC), Immunohistochemistry (Paraffin-embedded Sections) (IHC (p))

Product Details

Immunogen:	Synthetic peptide located between aa240-289 of human FOSB (P53539, NP_006723). Percent identity by BLAST analysis: Human, Chimpanzee, Gorilla, Gibbon, Marmoset, Elephant, Panda, Bovine, Horse (100%), Galago, Mouse, Rat, Dog, Bat, Rabbit, Guinea pig (92%), Opossum (83%).  Type of Immunogen: Synthetic peptide
Isotype:	IgG
Specificity:	Human FOSB
Predicted Reactivity:	Percent identity by BLAST analysis: Human, Bovine (100%) Mouse, Dog, Rabbit, Guinea pig (92%).
Purification:	Protein A purified

## Target Details

---

Target:	FOSB
Alternative Name:	FOSB ( <a href="#">FOSB Products</a> )
Background:	Name/Gene ID: FOSB  Synonyms: FOSB, Activator protein 1, AP-1, GOS3, G0s3, GOSB, Protein fosB
Gene ID:	2354
NCBI Accession:	<a href="#">NP_006723</a>
UniProt:	<a href="#">P53539</a>

## Application Details

---

Application Notes:	Approved: IHC, IHC-P, WB (1.25 µg/mL)
Comment:	Target Species of Antibody: Human
Restrictions:	For Research Use only

## Handling

---

Format:	Lyophilized
Reconstitution:	After adding water, will consist of PBS buffer with 2 % sucrose
Concentration:	Lot specific
Buffer:	Lyophilized from PBS with 2 % sucrose
Handling Advice:	Avoid repeat freeze-thaw cycles.
Storage:	4 °C, -20 °C
Storage Comment:	Long term: -20°C, the use of 50% glycerol is recommended if storing aliquots in -20°C for long term use (up to 1 year)  Short term (less than 1 week): 4°C. Avoid freeze-thaw cycles.



Image 1.

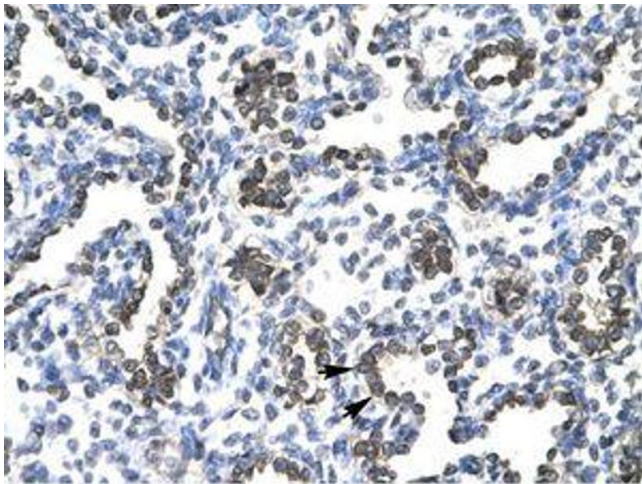


Image 2.