

Datasheet for ABIN202297
anti-JunB antibody (AA 241-290)



[Go to Product page](#)

1 Image

Overview

Quantity:	100 µL
Target:	JunB (JUNB)
Binding Specificity:	AA 241-290
Reactivity:	Human, Mouse, Rat, Cow, Dog, Sheep, Horse, Monkey, Guinea Pig, Zebrafish (Danio rerio), Bat, Pig, Xenopus laevis
Host:	Rabbit
Clonality:	Polyclonal
Conjugate:	This JunB antibody is un-conjugated
Application:	Western Blotting (WB)

Product Details

Immunogen:	Synthetic peptide located between aa241-290 of human JUNB (P17275, NP_002220). Percent identity by BLAST analysis: Human, Chimpanzee, Monkey, Galago, Mouse, Rat, Sheep, Elephant, Dog, Bovine, Bat, Horse, Pig, Opossum, Guinea pig, Platypus, Xenopus (100%), Zebrafish (85%), Pufferfish (84%). Type of Immunogen: Synthetic peptide
Isotype:	IgG
Specificity:	Human JUNB
Predicted Reactivity:	Percent identity by BLAST analysis: Human, Mouse, Rat, Sheep, Dog, Bovine, Guinea pig (100%) Xenopus, Zebrafish (85%).

Product Details

Purification: Protein A purified

Target Details

Target: JunB (JUNB)

Alternative Name: JUNB / JUN-B ([JUNB Products](#))

Background: Name/Gene ID: JUNB

Synonyms: JUNB, Activator protein 1, AP-1, Jun B proto-oncogene, G0s3, Transcription factor jun-B

Gene ID: 3726

NCBI Accession: [NP_002220](#)

UniProt: [P17275](#)

Application Details

Application Notes: Approved: WB (2.5 µg/mL)

Comment: Target Species of Antibody: Human

Restrictions: For Research Use only

Handling

Format: Lyophilized

Reconstitution: After adding water, will consist of PBS buffer with 2 % sucrose

Concentration: Lot specific

Buffer: Lyophilized.

Handling Advice: Avoid repeat freeze-thaw cycles.

Storage: 4 °C,-20 °C

Storage Comment: Long term: -20°C, the use of 50% glycerol is recommended if storing aliquots in -20°C for long term use (up to 1 year)

Short term (less than 1 week): 4°C. Avoid freeze-thaw cycles.

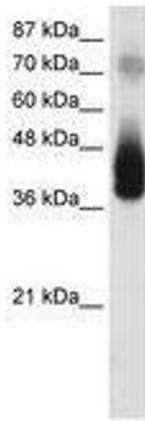


Image 1.