



[Go to Product page](#)

Datasheet for ABIN202302

anti-ZSCAN16 antibody (AA 181-230)

1 Image

Overview

Quantity:	100 µL
Target:	ZSCAN16
Binding Specificity:	AA 181-230
Reactivity:	Human
Host:	Rabbit
Clonality:	Polyclonal
Conjugate:	This ZSCAN16 antibody is un-conjugated
Application:	Western Blotting (WB)

Product Details

Immunogen:	Synthetic peptide located between aa181-230 of human ZSCAN16 (Q9H4T2, NP_079507). Percent identity by BLAST analysis: Human, Gorilla, Gibbon (100%), Monkey (92%), Marmoset (90%). Type of Immunogen: Synthetic peptide
Isotype:	IgG
Specificity:	Human ZSCAN16 / ZNF435
Predicted Reactivity:	Percent identity by BLAST analysis: Human (100%).
Purification:	Protein A purified

Target Details

Target:	ZSCAN16
Alternative Name:	ZNF435 / ZSCAN16 (ZSCAN16 Products)
Background:	Name/Gene ID: ZSCAN16 Family: Zinc Finger Synonyms: ZSCAN16, DJ265C24.3, ZNF392, Zinc finger protein 392, Zinc finger protein 435, ZNF435
Gene ID:	80345
NCBI Accession:	NP_079507
UniProt:	Q9H4T2

Application Details

Application Notes:	Approved: WB (2.5 µg/mL)
Comment:	Target Species of Antibody: Human
Restrictions:	For Research Use only

Handling

Format:	Lyophilized
Reconstitution:	After adding water, will consist of PBS buffer with 2 % sucrose
Concentration:	Lot specific
Buffer:	Lyophilized from PBS with 2 % sucrose
Handling Advice:	Avoid repeat freeze-thaw cycles.
Storage:	4 °C,-20 °C
Storage Comment:	Long term: -20°C, the use of 50% glycerol is recommended if storing aliquots in -20°C for long term use (up to 1 year) Short term (less than 1 week): 4°C. Avoid freeze-thaw cycles.

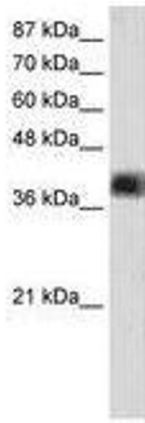


Image 1.