



[Go to Product page](#)

Datasheet for ABIN202309

## anti-HIF1AN antibody (N-Term)

### 1 Image

#### Overview

Quantity:	100 µL
Target:	HIF1AN
Binding Specificity:	N-Term
Reactivity:	Human, Mouse, Rat, Rabbit, Dog, Cow, Guinea Pig, Monkey
Host:	Rabbit
Clonality:	Polyclonal
Conjugate:	This HIF1AN antibody is un-conjugated
Application:	Western Blotting (WB)

#### Product Details

Immunogen:	Synthetic peptide from N-Terminus of human HIF1AN (Q9NWT6, NP_060372). Percent identity by BLAST analysis: Human, Gorilla, Gibbon, Monkey, Galago, Marmoset, Mouse, Rat, Elephant, Dog, Bovine, Rabbit, Opossum, Guinea pig (100%), Bat, Horse, Turkey, Zebra finch, Chicken (92%).  Type of Immunogen: Synthetic peptide
Isotype:	IgG
Specificity:	Human HIF1AN
Predicted Reactivity:	Percent identity by BLAST analysis: Mouse, Rat, Dog, Bovine, Rabbit, Guinea pig (100%) Horse, Chicken (92%).
Purification:	Protein A purified

## Target Details

---

Target:	HIF1AN
Alternative Name:	HIF1AN ( <a href="#">HIF1AN Products</a> )
Background:	Name/Gene ID: HIF1AN  Synonyms: HIF1AN, Factor inhibiting HIF-1, FIH1, Factor inhibiting HIF1, FIH-1
Gene ID:	55662
NCBI Accession:	<a href="#">NP_060372</a>
UniProt:	<a href="#">Q9NWT6</a>
Pathways:	<a href="#">Regulation of Muscle Cell Differentiation, Skeletal Muscle Fiber Development</a>

## Application Details

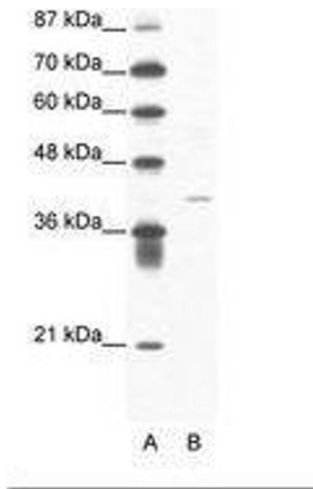
---

Application Notes:	Approved: WB (1.25 µg/mL)
Comment:	Target Species of Antibody: Human
Restrictions:	For Research Use only

## Handling

---

Format:	Lyophilized
Reconstitution:	After adding water, will consist of PBS buffer with 2 % sucrose
Concentration:	Lot specific
Buffer:	Lyophilized from PBS with 2 % sucrose
Handling Advice:	Avoid repeat freeze-thaw cycles.
Storage:	4 °C,-20 °C
Storage Comment:	Long term: -20°C, the use of 50% glycerol is recommended if storing aliquots in -20°C for long term use (up to 1 year) Short term (less than 1 week): 4°C. Avoid freeze-thaw cycles.



**Image 1.**