

Datasheet for ABIN202324
anti-CLCN6 antibody (AA 215-264)[Go to Product page](#)

1 Image

Overview

Quantity:	100 µL
Target:	CLCN6
Binding Specificity:	AA 215-264
Reactivity:	Human, Rat, Mouse, Rabbit, Monkey, Dog, Cow, Guinea Pig, Horse, Chicken, Pig
Host:	Rabbit
Clonality:	Polyclonal
Conjugate:	This CLCN6 antibody is un-conjugated
Application:	Western Blotting (WB)

Product Details

Immunogen:	Synthetic peptide located between aa215-264 of human CLCN6 (Q5SNX3). Percent identity by BLAST analysis: Human, Chimpanzee, Gorilla, Orangutan, Gibbon, Monkey, Galago, Marmoset, Mouse, Rat, Panda, Dog, Bovine, Rabbit, Horse, Pig, Opossum, Guinea pig, Turkey, Zebra finch, Chicken (100%), Bat, Platypus (92%), Elephant (85%). Type of Immunogen: Synthetic peptide
Isotype:	IgG
Specificity:	Human CLCN6
Predicted Reactivity:	Percent identity by BLAST analysis: Human, Mouse, Rat, Dog, Bovine, Rabbit, Horse, Pig, Chicken (100%).
Purification:	Protein A purified

Target Details

Target:	CLCN6
Alternative Name:	CLCN6 (CLCN6 Products)
Background:	Name/Gene ID: CLCN6 Subfamily: Chloride channel - CLC Family: Ion Channel Synonyms: CLCN6, Chloride channel 6, Chloride channel protein 6, Chloride transport protein 6, CLC-6, KIAA0046
Gene ID:	1185
UniProt:	P51797

Application Details

Application Notes:	Approved: WB (1.25 µg/mL)
Comment:	Target Species of Antibody: Human
Restrictions:	For Research Use only

Handling

Format:	Lyophilized
Reconstitution:	After adding water, will consist of PBS buffer with 2 % sucrose
Concentration:	Lot specific
Buffer:	Lyophilized from PBS with 2 % sucrose
Handling Advice:	Avoid repeat freeze-thaw cycles.
Storage:	4 °C,-20 °C
Storage Comment:	Long term: -20°C, the use of 50% glycerol is recommended if storing aliquots in -20°C for long term use (up to 1 year) Short term (less than 1 week): 4°C. Avoid freeze-thaw cycles.

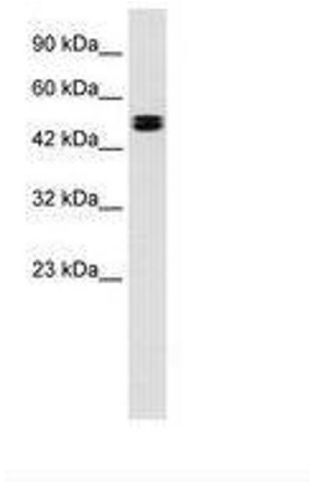


Image 1.