



[Go to Product page](#)

Datasheet for ABIN202327

anti-FOXF1 antibody (AA 292-341)

2 Images

Overview

Quantity:	100 µL
Target:	FOXF1
Binding Specificity:	AA 292-341
Reactivity:	Human, Rabbit, Horse, Monkey
Host:	Rabbit
Clonality:	Polyclonal
Conjugate:	This FOXF1 antibody is un-conjugated
Application:	Western Blotting (WB), Immunohistochemistry (IHC), Immunohistochemistry (Paraffin-embedded Sections) (IHC (p))

Product Details

Immunogen:	Synthetic peptide located between aa292-341 of human FOXF1 (Q12946, NP_001442). Percent identity by BLAST analysis: Human, Chimpanzee, Gorilla, Gibbon, Monkey, Galago, Marmoset, Elephant, Rabbit, Horse (100%), Mouse, Dog, Bovine, Opossum, Guinea pig (92%), Turkey, Chicken, Platypus (84%). Type of Immunogen: Synthetic peptide
Isotype:	IgG
Specificity:	Human FOXF1
Predicted Reactivity:	Percent identity by BLAST analysis: Human, Horse (100%) Mouse, Dog, Bovine, Guinea pig (92%) Chicken (84%).

Product Details

Purification: Protein A purified

Target Details

Target: FOXF1

Alternative Name: FOXF1 ([FOXF1 Products](#))

Background: Name/Gene ID: FOXF1
Family: Transcription factor

Synonyms: FOXF1, ACDMPV, Forkhead-related activator 1, FKHL5, Forkhead box F1, Forkhead box protein F1, Forkhead-related protein FKHL5, FREAC-1, FREAC1

Gene ID: 2294

NCBI Accession: [NP_001442](#)

UniProt: [Q12946](#)

Pathways: [Regulation of Leukocyte Mediated Immunity](#), [Regulation of Muscle Cell Differentiation](#), [Positive Regulation of Immune Effector Process](#)

Application Details

Application Notes: Approved: IHC, IHC-P (4 - 8 µg/mL), WB (2.5 µg/mL)

Comment: Target Species of Antibody: Human

Restrictions: For Research Use only

Handling

Format: Lyophilized

Reconstitution: Distilled water

Concentration: Lot specific

Buffer: Lyophilized from PBS with 2 % sucrose

Handling Advice: Avoid repeat freeze-thaw cycles.

Storage: 4 °C, -20 °C

Storage Comment: Long term: -20°C, the use of 50% glycerol is recommended if storing aliquots in -20°C for long term use (up to 1 year)

Handling

Short term (less than 1 week): 4°C. Avoid freeze-thaw cycles.

Images

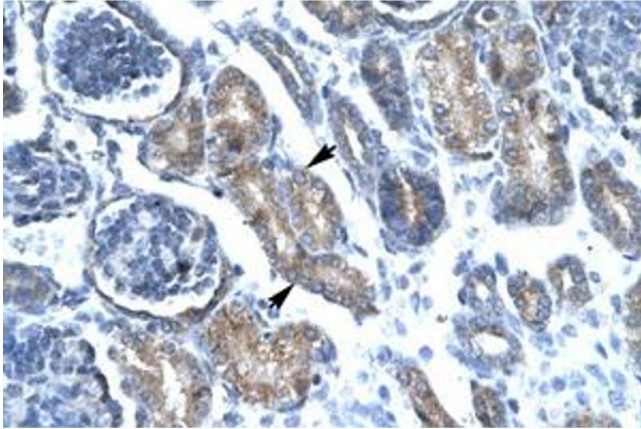


Image 1.

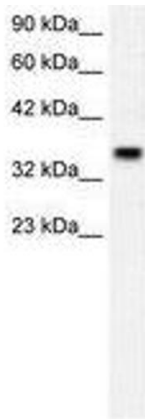


Image 2.