



Datasheet for ABIN202334  
**anti-PCBP1 antibody (AA 201-250)**



[Go to Product page](#)

1 Image

Overview

Quantity:	100 µL
Target:	PCBP1
Binding Specificity:	AA 201-250
Reactivity:	Human
Host:	Rabbit
Clonality:	Polyclonal
Conjugate:	This PCBP1 antibody is un-conjugated
Application:	Western Blotting (WB)

Product Details

Immunogen:	Synthetic peptide located between aa201-250 of human PCBP1 (Q15365, NP_006187). Percent identity by BLAST analysis: Human, Gorilla, Gibbon, Mouse, Rat, Hamster, Panda, Bovine, Bat, Rabbit, Horse, Guinea pig (92%).  Type of Immunogen: Synthetic peptide
Isotype:	IgG
Specificity:	Human PCBP1
Predicted Reactivity:	Percent identity by BLAST analysis: Human, Mouse, Rat, Bovine, Rabbit, Horse (92%).
Purification:	Protein A purified

## Target Details

---

Target:	PCBP1
Alternative Name:	HnRNP-E1 / PCBP1 ( <a href="#">PCBP1 Products</a> )
Background:	Name/Gene ID: PCBP1  Synonyms: PCBP1, Alpha-CP1, HnRNP E1, HnRNP-E1, HnRNP-X, HNRPE1, Poly(rC) binding protein 1, HNRPX, Poly(rC)-binding protein 1
Gene ID:	5093
NCBI Accession:	<a href="#">NP_006187</a>
UniProt:	<a href="#">Q15365</a>

## Application Details

---

Application Notes:	Approved: WB (1.25 µg/mL)
Comment:	Target Species of Antibody: Human
Restrictions:	For Research Use only

## Handling

---

Format:	Lyophilized
Reconstitution:	After adding water, will consist of PBS buffer with 2 % sucrose
Concentration:	Lot specific
Buffer:	Lyophilized from PBS with 2 % sucrose
Handling Advice:	Avoid repeated freezing and thawing.
Storage:	4 °C, -20 °C
Storage Comment:	Long term: -20°C, the use of 50% glycerol is recommended if storing aliquots in -20°C for long term use (up to 1 year)  Short term (less than 1 week): 4°C. Avoid freeze-thaw cycles.

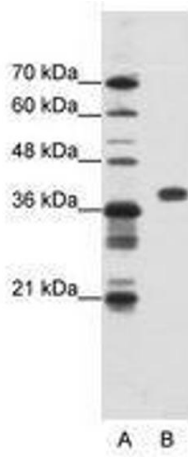


Image 1.