



Datasheet for ABIN202358
anti-MTHFSD antibody (AA 60-109)



[Go to Product page](#)

2 Images

Overview

Quantity:	100 µL
Target:	MTHFSD
Binding Specificity:	AA 60-109
Reactivity:	Human, Mouse, Dog, Cow, Horse, Rabbit, Zebrafish (Danio rerio)
Host:	Rabbit
Clonality:	Polyclonal
Conjugate:	This MTHFSD antibody is un-conjugated
Application:	Western Blotting (WB), Immunohistochemistry (IHC), Immunohistochemistry (Paraffin-embedded Sections) (IHC (p))

Product Details

Immunogen:	Synthetic peptide located between aa60-109 of human MTHFSD (Q9H954, NP_073601). Percent identity by BLAST analysis: Human, Chimpanzee, Gorilla, Orangutan, Gibbon, Galago, Mouse, Dog, Bovine, Rabbit, Horse (100%), Marmoset, Bat, Pig, Platypus (92%), Elephant, Opossum (85%), Chicken, Stickleback (84%). Type of Immunogen: Synthetic peptide
Isotype:	IgG
Specificity:	Human MTHFSD
Predicted Reactivity:	Percent identity by BLAST analysis: Human, Mouse, Dog, Horse (100%) Pig (92%) Rabbit (91%) Chicken (84%).

Product Details

Purification: Protein A purified

Target Details

Target: MTHFSD

Alternative Name: MTHFSD ([MTHFSD Products](#))

Background: Name/Gene ID: MTHFSD

Synonyms: MTHFSD

Gene ID: 64779

NCBI Accession: [NP_073601](#)

UniProt: [Q2M296](#)

Application Details

Application Notes: Approved: IHC, IHC-P, WB (0.62 µg/mL)

Comment: Target Species of Antibody: Human

Restrictions: For Research Use only

Handling

Format: Lyophilized

Reconstitution: After adding water, will consist of PBS buffer with 2 % sucrose

Concentration: Lot specific

Buffer: Lyophilized from PBS with 2 % sucrose

Handling Advice: Avoid repeat freeze-thaw cycles.

Storage: 4 °C, -20 °C

Storage Comment: Long term: -20°C, the use of 50% glycerol is recommended if storing aliquots in -20°C for long term use (up to 1 year)

Short term (less than 1 week): 4°C. Avoid freeze-thaw cycles.

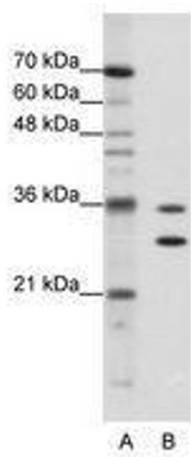


Image 1.

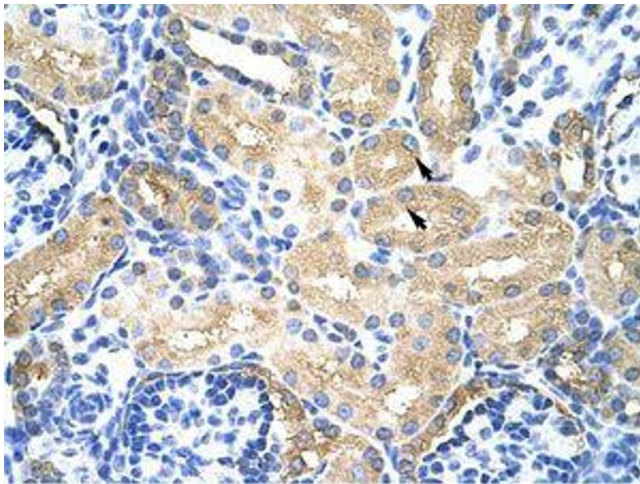


Image 2.