



## Datasheet for ABIN202366 anti-CSDA antibody (AA 50-99)



[Go to Product page](#)

### 1 Image

#### Overview

Quantity:	100 µL
Target:	CSDA
Binding Specificity:	AA 50-99
Reactivity:	Human, Pig, Rat, Guinea Pig, Monkey
Host:	Rabbit
Clonality:	Polyclonal
Conjugate:	This CSDA antibody is un-conjugated
Application:	Western Blotting (WB)

#### Product Details

Immunogen:	Synthetic peptide located between aa50-99 of human YBX3 (P16989, NP_003642). Percent identity by BLAST analysis: Human, Gorilla, Gibbon, Marmoset, Rat, Elephant, Pig (100%), Galago, Mouse, Dog, Bovine (92%), Guinea pig (84%).  Type of Immunogen: Synthetic peptide
Isotype:	IgG
Specificity:	Human CSDA
Predicted Reactivity:	Percent identity by BLAST analysis: Human, Rat, Pig (100%) Mouse, Dog, Bovine (92%) Guinea pig (84%).
Purification:	Protein A/G purified

## Target Details

---

Target:	CSDA
Alternative Name:	YBX3 / CSDA ( <a href="#">CSDA Products</a> )
Background:	Name/Gene ID: YBX3  Synonyms: YBX3, Cold-shock domain protein A, Cold shock domain protein A, CSDA, CSDA1, DNA-binding protein A, DBPA, ZONAB
Gene ID:	8531
NCBI Accession:	<a href="#">NP_003642</a>
UniProt:	<a href="#">P16989</a>
Pathways:	<a href="#">Negative Regulation of intrinsic apoptotic Signaling</a>

## Application Details

---

Application Notes:	Approved: WB (1 µg/mL)
Comment:	Target Species of Antibody: Human
Restrictions:	For Research Use only

## Handling

---

Format:	Lyophilized
Reconstitution:	After adding water, will consist of PBS buffer with 2 % sucrose
Concentration:	Lot specific
Buffer:	Lyophilized.
Handling Advice:	Avoid repeat freeze-thaw cycles.
Storage:	4 °C,-20 °C
Storage Comment:	Long term: -20°C, the use of 50% glycerol is recommended if storing aliquots in -20°C for long term use (up to 1 year)  Short term (less than 1 week): 4°C. Avoid freeze-thaw cycles.

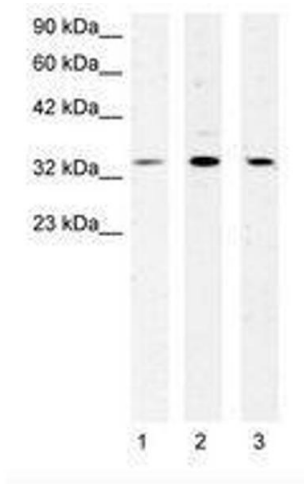


Image 1.