

Datasheet for ABIN202368

## anti-HMX1 antibody (AA 189-238)



[Go to Product page](#)

### 1 Image

#### Overview

Quantity:	100 µL
Target:	HMX1
Binding Specificity:	AA 189-238
Reactivity:	Human, Zebrafish (Danio rerio)
Host:	Rabbit
Clonality:	Polyclonal
Conjugate:	This HMX1 antibody is un-conjugated
Application:	Western Blotting (WB)

#### Product Details

Immunogen:	Synthetic peptide located between aa189-238 of human HMX1 (Q9NP08, NP_061815). Percent identity by BLAST analysis: Human (100%), Gorilla, Monkey, Galago, Mouse, Rat, Dog, Bovine, Pig, Guinea pig, Xenopus (92%), Opossum, Chicken, Lizard, Stickleback, Zebrafish, Drosophila (85%).  Type of Immunogen: Synthetic peptide
Isotype:	IgG
Specificity:	Human HMX1
Predicted Reactivity:	Percent identity by BLAST analysis: Human (100%) Mouse, Rat, Dog, Bovine, Pig, Guinea pig (92%).
Purification:	Protein A purified

## Target Details

Target:	HMX1
Alternative Name:	HMX1 ( <a href="#">HMX1 Products</a> )
Background:	Name/Gene ID: HMX1  Synonyms: HMX1, H6 family homeobox 1, Homeobox protein HMX1, H6, Homeo box (H6 family) 1, Homeobox protein H6, H6 homeodomain protein, NKX5-3
Gene ID:	3166
NCBI Accession:	<a href="#">NP_061815</a>
UniProt:	<a href="#">Q9NP08</a>

## Application Details

Application Notes:	Approved: WB (5 µg/mL)
Comment:	Target Species of Antibody: Human
Restrictions:	For Research Use only

## Handling

Format:	Lyophilized
Reconstitution:	After adding water, will consist of PBS buffer with 2 % sucrose
Concentration:	Lot specific
Buffer:	Lyophilized from PBS with 2 % sucrose
Handling Advice:	Avoid repeat freeze-thaw cycles.
Storage:	4 °C,-20 °C
Storage Comment:	Long term: -20°C, the use of 50% glycerol is recommended if storing aliquots in -20°C for long term use (up to 1 year) Short term (less than 1 week): 4°C. Avoid freeze-thaw cycles.

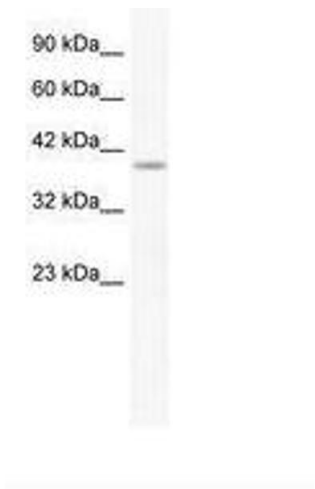


Image 1.