



[Go to Product page](#)

Datasheet for ABIN202376

anti-ERGIC2 antibody (N-Term)

1 Image

Overview

Quantity:	100 µL
Target:	ERGIC2
Binding Specificity:	N-Term
Reactivity:	Human, Rat, Guinea Pig, Cow, Bat, Monkey, Chicken
Host:	Rabbit
Clonality:	Polyclonal
Conjugate:	This ERGIC2 antibody is un-conjugated
Application:	Western Blotting (WB)

Product Details

Immunogen:	Synthetic peptide from N-Terminus of human ERGIC2 (Q96RQ1, NP_057654). Percent identity by BLAST analysis: Human, Chimpanzee, Gorilla, Gibbon, Monkey, Rat, Elephant, Bovine, Bat, Opossum, Turkey, Zebra finch, Chicken, Platypus (100%), Galago, Mouse, Panda, Dog, Rabbit, Horse, Pig, Lizard, Xenopus, Pike, Zebrafish (92%), Guinea pig (86%), Salmon (85%). Type of Immunogen: Synthetic peptide
Isotype:	IgG
Specificity:	Human ERGIC2
Predicted Reactivity:	Percent identity by BLAST analysis: Human, Bovine, Chicken (100%) Mouse, Rat, Dog, Pig, Xenopus (92%) Guinea pig (86%).
Purification:	Protein A purified

Target Details

Target:	ERGIC2
Alternative Name:	ERGIC2 (ERGIC2 Products)
Background:	Name/Gene ID: ERGIC2 Synonyms: ERGIC2, CD14 protein, Erv41, Cd002, CDA14, ERGIC and golgi 2, PTX1
Gene ID:	51290
NCBI Accession:	NP_057654
UniProt:	Q96RQ1

Application Details

Application Notes:	Approved: WB (2.5 µg/mL)
Comment:	Target Species of Antibody: Human
Restrictions:	For Research Use only

Handling

Format:	Lyophilized
Reconstitution:	After adding water, will consist of PBS buffer with 2 % sucrose
Concentration:	Lot specific
Buffer:	Lyophilized from PBS with 2 % sucrose
Handling Advice:	Avoid repeat freeze-thaw cycles.
Storage:	4 °C, -20 °C
Storage Comment:	Long term: -20°C, the use of 50% glycerol is recommended if storing aliquots in -20°C for long term use (up to 1 year) Short term (less than 1 week): 4°C. Avoid freeze-thaw cycles.

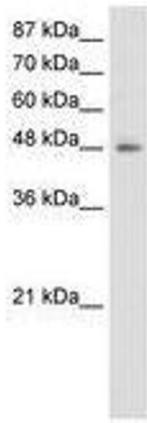


Image 1.