



Datasheet for ABIN202378
anti-ZNF568 antibody (AA 121-170)



[Go to Product page](#)

1 Image

Overview

Quantity:	100 µL
Target:	ZNF568
Binding Specificity:	AA 121-170
Reactivity:	Human, Horse, Monkey
Host:	Rabbit
Clonality:	Polyclonal
Conjugate:	This ZNF568 antibody is un-conjugated
Application:	Western Blotting (WB)

Product Details

Immunogen:	Synthetic peptide located between aa121-170 of human ZNF568 (Q6N060, NP_940941). Percent identity by BLAST analysis: Human, Gorilla, Gibbon, Monkey, Marmoset, Horse (100%), Bovine, Pig (92%). Type of Immunogen: Synthetic peptide
Isotype:	IgG
Specificity:	Human ZNF568
Predicted Reactivity:	Percent identity by BLAST analysis: Human, Horse (100%) Bovine, Pig (92%).
Purification:	Protein A purified

Target Details

Target:	ZNF568
Alternative Name:	ZNF568 (ZNF568 Products)
Background:	Name/Gene ID: ZNF568 Family: Zinc Finger Synonyms: ZNF568, Zinc finger protein 568
Gene ID:	374900
NCBI Accession:	NP_940941
UniProt:	Q3ZCX4

Application Details

Application Notes:	Approved: WB (1.25 µg/mL)
Comment:	Target Species of Antibody: Human
Restrictions:	For Research Use only

Handling

Format:	Lyophilized
Reconstitution:	After adding water, will consist of PBS buffer with 2 % sucrose
Concentration:	Lot specific
Buffer:	Lyophilized from PBS with 2 % sucrose
Handling Advice:	Avoid repeat freeze-thaw cycles.
Storage:	4 °C, -20 °C
Storage Comment:	Long term: -20°C, the use of 50% glycerol is recommended if storing aliquots in -20°C for long term use (up to 1 year) Short term (less than 1 week): 4°C. Avoid freeze-thaw cycles.

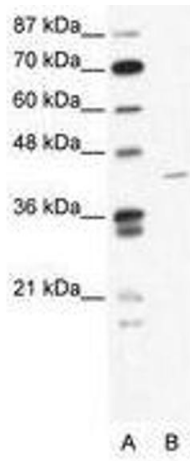


Image 1.