



[Go to Product page](#)

Datasheet for ABIN202407  
**anti-TSG101 antibody (C-Term)**

1 Image

Overview

Quantity:	100 µL
Target:	TSG101
Binding Specificity:	C-Term
Reactivity:	Human, Mouse, Rat, Dog, Cow, Goat, Horse, Rabbit, Guinea Pig, Monkey, Zebrafish (Danio rerio), Pig, Chicken, Bat, Xenopus laevis
Host:	Rabbit
Clonality:	Polyclonal
Conjugate:	This TSG101 antibody is un-conjugated
Application:	Western Blotting (WB)

Product Details

Immunogen:	Synthetic peptide from C-Terminus of human TSG101 (Q99816, NP_006283). Percent identity by BLAST analysis: Human, Chimpanzee, Gorilla, Gibbon, Monkey, Galago, Marmoset, Mouse, Rat, Goat, Elephant, Panda, Dog, Bovine, Bat, Rabbit, Horse, Pig, Opossum, Guinea pig, Turkey, Chicken, Platypus, Lizard, Xenopus, Catfish, Stickleback, Zebrafish (100%).  Type of Immunogen: Synthetic peptide
Isotype:	IgG
Specificity:	Human TSG101
Predicted Reactivity:	Percent identity by BLAST analysis: Human, Mouse, Rat, Dog, Bovine, Goat, Rabbit, Horse, Pig, Chicken, Zebrafish (100%).

## Product Details

---

Purification: Protein A purified

## Target Details

---

Target: TSG101

Alternative Name: TSG101 ([TSG101 Products](#))

Background: Name/Gene ID: TSG101

Synonyms: TSG101, ESCRT-I complex subunit TSG101, Tumor susceptibility gene 10, Tumor susceptibility protein, VPS23, Tumor susceptibility gene 101, TSG10

Gene ID: 7251

NCBI Accession: [NP\\_006283](#)

UniProt: [Q99816](#)

## Application Details

---

Application Notes: Approved: WB (2.5 µg/mL)

Comment: Target Species of Antibody: Human

Restrictions: For Research Use only

## Handling

---

Format: Lyophilized

Reconstitution: After adding water, will consist of PBS buffer with 2 % sucrose

Concentration: Lot specific

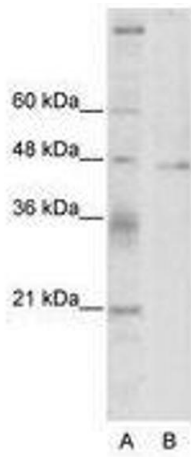
Buffer: Lyophilized from PBS with 2 % sucrose

Handling Advice: Avoid repeat freeze-thaw cycles.

Storage: 4 °C, -20 °C

Storage Comment: Long term: -20°C, the use of 50% glycerol is recommended if storing aliquots in -20°C for long term use (up to 1 year)

Short term (less than 1 week): 4°C. Avoid freeze-thaw cycles.



**Image 1.**