



[Go to Product page](#)

Datasheet for ABIN202412
anti-DPF2 antibody (N-Term)

1 Image

Overview

Quantity:	100 µL
Target:	DPF2
Binding Specificity:	N-Term
Reactivity:	Human, Mouse, Rat, Cow, Dog, Horse, Goat, Rabbit, Guinea Pig, Zebrafish (Danio rerio), Hamster, Pig, Bat, Monkey, Xenopus laevis
Host:	Rabbit
Clonality:	Polyclonal
Conjugate:	This DPF2 antibody is un-conjugated
Application:	Western Blotting (WB)

Product Details

Immunogen:	Synthetic peptide from N-Terminus of human DPF2 (Q92785, NP_006259). Percent identity by BLAST analysis: Human, Chimpanzee, Gorilla, Orangutan, Gibbon, Monkey, Galago, Marmoset, Mouse, Rat, Goat, Hamster, Panda, Dog, Bovine, Bat, Rabbit, Horse, Pig, Guinea pig, Platypus, Xenopus (100%), Elephant, Opossum, Chicken (92%), Salmon, Zebrafish (85%). Type of Immunogen: Synthetic peptide
Isotype:	IgG
Specificity:	Human DPF2
Predicted Reactivity:	Percent identity by BLAST analysis: Human, Mouse, Rat, Dog, Bovine, Goat, Rabbit, Horse, Pig (100%) Zebrafish (85%).

Product Details

Purification: Protein A purified

Target Details

Target: DPF2

Alternative Name: Requierm / DPF2 ([DPF2 Products](#))

Background: Name/Gene ID: DPF2

Synonyms: DPF2, BAF45D, REQ, UBID4, Zinc finger protein ubi-d4, BRG1-associated factor 45D, Ubi-d4, Protein requierm, Requierm

Gene ID: 5977

NCBI Accession: [NP_006259](#)

UniProt: [Q92785](#)

Application Details

Application Notes: Approved: WB (0.31 µg/mL)

Comment: Target Species of Antibody: Human

Restrictions: For Research Use only

Handling

Format: Lyophilized

Reconstitution: After adding water, will consist of PBS buffer with 2 % sucrose

Concentration: Lot specific

Buffer: Lyophilized from PBS with 2 % sucrose

Handling Advice: Avoid repeat freeze-thaw cycles.

Storage: 4 °C, -20 °C

Storage Comment: Long term: -20°C, the use of 50% glycerol is recommended if storing aliquots in -20°C for long term use (up to 1 year)

Short term (less than 1 week): 4°C. Avoid freeze-thaw cycles.

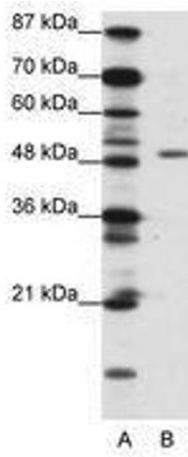


Image 1.