



Datasheet for ABIN202424  
**anti-ACAT2 antibody (AA 174-223)**



[Go to Product page](#)

2 Images

Overview

Quantity:	100 µL
Target:	ACAT2
Binding Specificity:	AA 174-223
Reactivity:	Human, Monkey, Cow, Guinea Pig
Host:	Rabbit
Clonality:	Polyclonal
Conjugate:	This ACAT2 antibody is un-conjugated
Application:	Western Blotting (WB), Immunohistochemistry (IHC), Immunohistochemistry (Paraffin-embedded Sections) (IHC (p))

Product Details

Immunogen:	Synthetic peptide located between aa174-223 of human SLC4A1 (Q9BWD1, NP_005882). Percent identity by BLAST analysis: Human, Chimpanzee, Gorilla, Orangutan, Gibbon, Marmoset, Bovine, Guinea pig (100%), Rabbit, Horse (92%), Galago, Mouse, Dog, Bat (91%), Rat (84%), Hamster, Elephant (83%).  Type of Immunogen: Synthetic peptide
Isotype:	IgG
Specificity:	Human ACAT2
Predicted Reactivity:	Percent identity by BLAST analysis: Human, Bovine, Guinea pig (100%) Rabbit (92%) Mouse, Dog (91%).

## Product Details

---

Purification: Protein A purified

## Target Details

---

Target: ACAT2

Alternative Name: ACAT2 ([ACAT2 Products](#))

Background: Name/Gene ID: ACAT2

Synonyms: ACAT2, Acetyl-CoA acetyltransferase 2, ACTL, T-complex protein

Gene ID: 39

NCBI Accession: [NP\\_005882](#)

UniProt: [Q9BWD1](#)

## Application Details

---

Application Notes: Approved: IHC, IHC-P, WB (1 µg/mL)

Comment: Target Species of Antibody: Human

Restrictions: For Research Use only

## Handling

---

Format: Lyophilized

Reconstitution: After adding water, will consist of PBS buffer with 2 % sucrose

Concentration: Lot specific

Buffer: Lyophilized from PBS with 2 % sucrose

Handling Advice: Avoid repeat freeze-thaw cycles.

Storage: 4 °C, -20 °C

Storage Comment: Long term: -20°C, the use of 50% glycerol is recommended if storing aliquots in -20°C for long term use (up to 1 year)

Short term (less than 1 week): 4°C. Avoid freeze-thaw cycles.

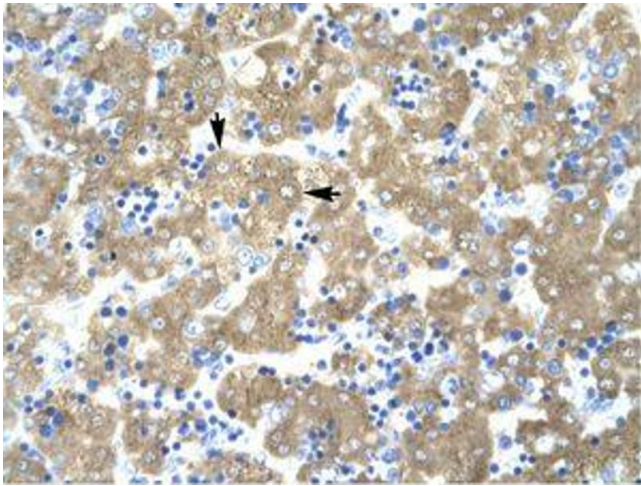


Image 1.



Image 2.