



Datasheet for ABIN202429  
**anti-BLZF1 antibody (N-Term)**



[Go to Product page](#)

2 Images

Overview

Quantity:	100 µL
Target:	BLZF1
Binding Specificity:	N-Term
Reactivity:	Human, Mouse, Rat, Guinea Pig, Horse, Rabbit, Monkey, Bat
Host:	Rabbit
Clonality:	Polyclonal
Conjugate:	This BLZF1 antibody is un-conjugated
Application:	Western Blotting (WB), Immunohistochemistry (IHC), Immunohistochemistry (Paraffin-embedded Sections) (IHC (p))

Product Details

Immunogen:	Synthetic peptide from N-Terminus of human BLZF1 (Q9H2G9, NP_003657). Percent identity by BLAST analysis: Human, Chimpanzee, Gorilla, Orangutan, Gibbon, Monkey, Galago, Marmoset, Mouse, Rat, Elephant, Bat, Rabbit, Horse, Guinea pig (100%), Bovine (92%), Opossum, Platypus, Lizard (85%).  Type of Immunogen: Synthetic peptide
Isotype:	IgG
Specificity:	Human BLZF1
Predicted Reactivity:	Percent identity by BLAST analysis: Human, Mouse, Rat, Rabbit, Horse, Guinea pig (100%) Bovine (92%).

## Product Details

---

Purification: Protein A purified

## Target Details

---

Target: BLZF1

Alternative Name: BLZF1 ([BLZF1 Products](#))

Background: Name/Gene ID: BLZF1

Synonyms: BLZF1, Cytoplasmic protein, Golgin-45, JEM-1, JEM-1s, JEM-1short protein, JEM1

Gene ID: 8548

NCBI Accession: [NP\\_003657](#)

UniProt: [Q9H2G9](#)

## Application Details

---

Application Notes: Approved: IHC, IHC-P, WB (2.5 µg/mL)

Comment: Target Species of Antibody: Human

Restrictions: For Research Use only

## Handling

---

Format: Lyophilized

Reconstitution: After adding water, will consist of PBS buffer with 2 % sucrose

Concentration: Lot specific

Buffer: Lyophilized from PBS with 2 % sucrose

Handling Advice: Avoid repeat freeze-thaw cycles.

Storage: 4 °C, -20 °C

Storage Comment: Long term: -20°C, the use of 50% glycerol is recommended if storing aliquots in -20°C for long term use (up to 1 year)

Short term (less than 1 week): 4°C. Avoid freeze-thaw cycles.

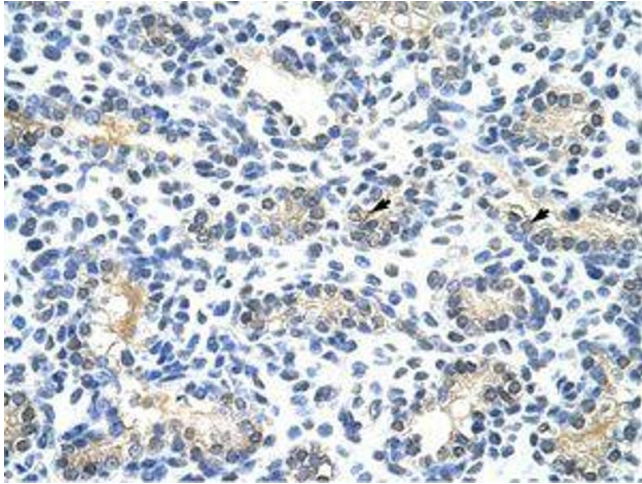


Image 1.

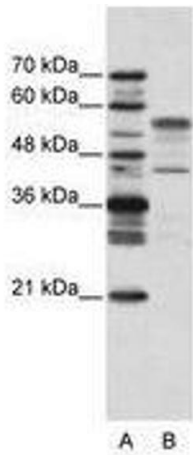


Image 2.