

Datasheet for ABIN202430
anti-Cnpase antibody (AA 86-135)



[Go to Product page](#)

1 Image

Overview

Quantity:	100 µL
Target:	Cnpase (CNP)
Binding Specificity:	AA 86-135
Reactivity:	Human, Horse, Monkey
Host:	Rabbit
Clonality:	Polyclonal
Conjugate:	This Cnpase antibody is un-conjugated
Application:	Western Blotting (WB)

Product Details

Immunogen:	Synthetic peptide located between aa86-135 of human CNP (P09543-2, NP_149124). Percent identity by BLAST analysis: Human, Chimpanzee, Gorilla, Orangutan, Gibbon, Monkey, Marmoset, Horse (100%), Dog, Pig (92%), Bat (91%), Galago, Elephant, Bovine (84%), Rat (76%). Type of Immunogen: Synthetic peptide
Isotype:	IgG
Specificity:	Human CNP
Predicted Reactivity:	Percent identity by BLAST analysis: Horse (100%) Dog, Pig (92%).
Purification:	Protein A purified

Target Details

Target:	Cnpase (CNP)
Alternative Name:	CNP / CNPase (CNP Products)
Background:	Name/Gene ID: CNP Family: Phosphodiesterase - Other Synonyms: CNP, CNP1, CNPase, Phosphodiesterase CNP
Gene ID:	1267
NCBI Accession:	NP_149124
UniProt:	P09543

Application Details

Application Notes:	Approved: WB (1.25 µg/mL)
Comment:	Target Species of Antibody: Human
Restrictions:	For Research Use only

Handling

Format:	Lyophilized
Reconstitution:	After adding water, will consist of PBS buffer with 2 % sucrose
Concentration:	Lot specific
Buffer:	Lyophilized from PBS with 2 % sucrose
Handling Advice:	Avoid repeat freeze-thaw cycles.
Storage:	4 °C, -20 °C
Storage Comment:	Long term: -20°C, the use of 50% glycerol is recommended if storing aliquots in -20°C for long term use (up to 1 year) Short term (less than 1 week): 4°C. Avoid freeze-thaw cycles.

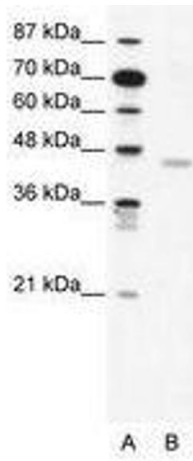


Image 1.