

Datasheet for ABIN202433
anti-Paired Box 3 antibody (AA 164-213)



[Go to Product page](#)

1 Image

Overview

Quantity:	100 µL
Target:	Paired Box 3 (PAX3)
Binding Specificity:	AA 164-213
Reactivity:	Human, Mouse, Rat, Dog, Cow, Horse, Rabbit, Guinea Pig, Bat, Monkey, Goat
Host:	Rabbit
Clonality:	Polyclonal
Conjugate:	This Paired Box 3 antibody is un-conjugated
Application:	Western Blotting (WB)

Product Details

Immunogen:	Synthetic peptide located between aa164-213 of human PAX3 (Q86UQ3, NP_852126). Percent identity by BLAST analysis: Human, Chimpanzee, Gorilla, Gibbon, Monkey, Galago, Marmoset, Mouse, Rat, Goat, Elephant, Dog, Bovine, Bat, Rabbit, Horse, Opossum, Guinea pig, Turkey, Zebra finch, Platypus, Lizard (100%), Chicken (92%). Type of Immunogen: Synthetic peptide
Isotype:	IgG
Specificity:	Human PAX3
Predicted Reactivity:	Percent identity by BLAST analysis: Human, Mouse, Rat, Dog, Bovine, Goat, Rabbit, Horse, Guinea pig (100%) Chicken (92%).
Purification:	Protein A purified

Target Details

Target:	Paired Box 3 (PAX3)
Alternative Name:	PAX3 (PAX3 Products)
Background:	Name/Gene ID: PAX3 Synonyms: PAX3, CDHS, Paired domain gene 3, Paired box protein Pax-3, Paired domain gene HuP2, Waardenburg syndrome 1, WS1, HUP2, Paired box 3, Paired box homeotic gene 3, WS3
Gene ID:	5077
NCBI Accession:	NP_852126
Pathways:	Sensory Perception of Sound, Tube Formation

Application Details

Application Notes:	Approved: WB (2.5 µg/mL)
Comment:	Target Species of Antibody: Human
Restrictions:	For Research Use only

Handling

Format:	Lyophilized
Reconstitution:	After adding water, will consist of PBS buffer with 2 % sucrose
Concentration:	Lot specific
Buffer:	Lyophilized from PBS with 2 % sucrose
Handling Advice:	Avoid repeat freeze-thaw cycles.
Storage:	4 °C, -20 °C
Storage Comment:	Long term: -20°C, the use of 50% glycerol is recommended if storing aliquots in -20°C for long term use (up to 1 year) Short term (less than 1 week): 4°C. Avoid freeze-thaw cycles.

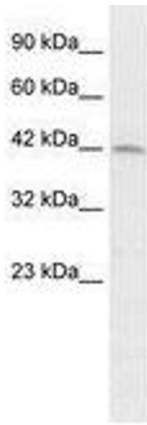


Image 1.