



[Go to Product page](#)

Datasheet for ABIN202435  
**anti-FOXQ1 antibody (AA 29-78)**

2 Images

Overview

Quantity:	100 µL
Target:	FOXQ1
Binding Specificity:	AA 29-78
Reactivity:	Human
Host:	Rabbit
Clonality:	Polyclonal
Conjugate:	This FOXQ1 antibody is un-conjugated
Application:	Western Blotting (WB), Immunohistochemistry (IHC), Immunohistochemistry (Paraffin-embedded Sections) (IHC (p))

Product Details

Immunogen:	Synthetic peptide located between aa29-78 of human FOXQ1 (Q9C009, NP_150285). Percent identity by BLAST analysis: Chimpanzee, Gorilla (100%), Human (85%).  Type of Immunogen: Synthetic peptide
Isotype:	IgG
Specificity:	Human FOXQ1
Predicted Reactivity:	Percent identity by BLAST analysis: Human (85%).
Purification:	Protein A purified

## Target Details

---

Target:	FOXQ1
Alternative Name:	FOXQ1 ( <a href="#">FOXQ1 Products</a> )
Background:	Name/Gene ID: FOXQ1  Synonyms: FOXQ1, Forkhead box Q1, HFH-1, HNF-3/forkhead-like protein 1, HFH1, Forkhead box protein Q1
Gene ID:	94234
NCBI Accession:	<a href="#">NP_150285</a>
UniProt:	<a href="#">Q9C009</a>
Pathways:	<a href="#">Positive Regulation of Endopeptidase Activity</a>

## Application Details

---

Application Notes:	Approved: IHC, IHC-P, WB (2.5 µg/mL)
Comment:	Target Species of Antibody: Human
Restrictions:	For Research Use only

## Handling

---

Format:	Lyophilized
Reconstitution:	Distilled water
Concentration:	Lot specific
Buffer:	Lyophilized from PBS with 2 % sucrose
Handling Advice:	Avoid repeat freeze-thaw cycles.
Storage:	4 °C,-20 °C
Storage Comment:	Long term: -20°C, the use of 50% glycerol is recommended if storing aliquots in -20°C for long term use (up to 1 year)  Short term (less than 1 week): 4°C. Avoid freeze-thaw cycles.

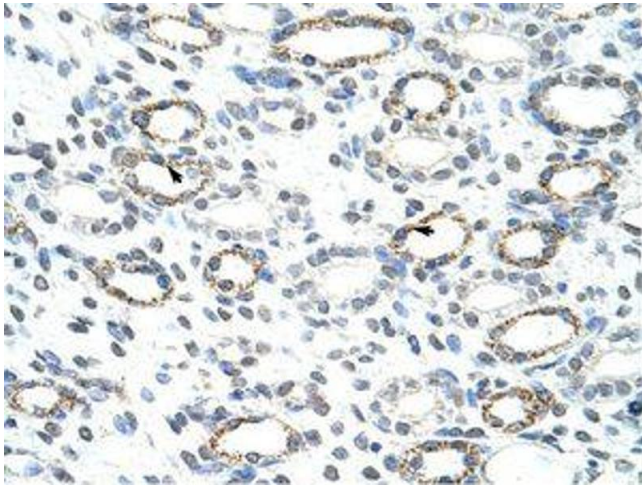


Image 1.

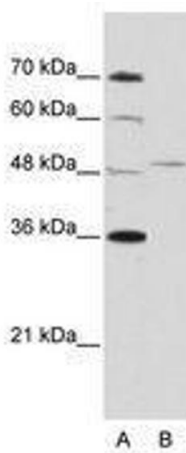


Image 2.