

Datasheet for ABIN202439
anti-PSMC3 antibody (AA 293-339)

2 Images

[Go to Product page](#)

Overview

Quantity:	100 µL
Target:	PSMC3
Binding Specificity:	AA 293-339
Reactivity:	Human, Mouse, Rat, Xenopus laevis, Dog, Cow, Rabbit, Horse, Guinea Pig, Monkey, Chicken, Bat, Pig
Host:	Rabbit
Clonality:	Polyclonal
Conjugate:	This PSMC3 antibody is un-conjugated
Application:	Western Blotting (WB), Immunohistochemistry (IHC), Immunohistochemistry (Paraffin-embedded Sections) (IHC (p))

Product Details

Immunogen:	Synthetic peptide located between aa293-339 of human PSMC3 (Q6IBS1, NP_002795). Percent identity by BLAST analysis: Human, Chimpanzee, Gibbon, Monkey, Mouse, Rat, Elephant, Dog, Bovine, Bat, Rabbit, Horse, Pig, Opossum, Guinea pig, Turkey, Chicken, Platypus, Lizard, Xenopus (100%), Salmon, Stickleback, Medaka, Zebrafish (92%). Type of Immunogen: Synthetic peptide
Isotype:	IgG
Specificity:	Human PSMC3
Predicted Reactivity:	Percent identity by BLAST analysis: Human, Mouse, Rat, Dog, Bovine, Rabbit, Horse, Pig, Guinea

Product Details

pig, Chicken (100%) Xenopus, Zebrafish (92%).

Purification: Protein A purified

Target Details

Target: PSMC3

Alternative Name: PSMC3 / Rpt5 ([PSMC3 Products](#))

Background: Name/Gene ID: PSMC3
Family: ATPase

Synonyms: PSMC3, Proteasome subunit P50, TBP1, TBP-1, Rpt5, Tat-binding protein 1

Gene ID: 5702

NCBI Accession: [NP_002795](#)

UniProt: [P17980](#)

Pathways: [Mitotic G1-G1/S Phases](#), [DNA Replication](#), [Synthesis of DNA](#), [Ubiquitin Proteasome Pathway](#)

Application Details

Application Notes: Approved: IHC, IHC-P, WB (1.25 µg/mL)

Comment: Target Species of Antibody: Human

Restrictions: For Research Use only

Handling

Format: Lyophilized

Reconstitution: After adding water, will consist of PBS buffer with 2 % sucrose

Concentration: Lot specific

Buffer: Lyophilized from PBS with 2 % sucrose

Handling Advice: Avoid repeat freeze-thaw cycles.

Storage: 4 °C, -20 °C

Storage Comment: Long term: -20°C, the use of 50% glycerol is recommended if storing aliquots in -20°C for long term use (up to 1 year)

Handling

Short term (less than 1 week): 4°C. Avoid freeze-thaw cycles.

Images

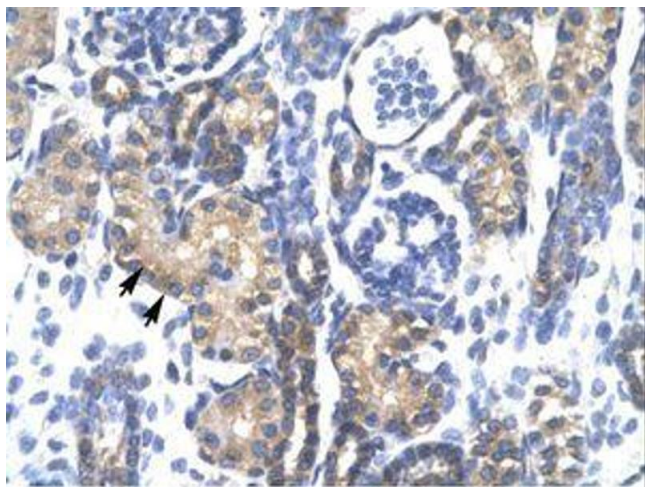


Image 1.

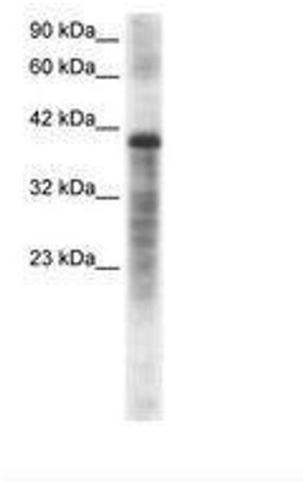


Image 2.