



Datasheet for ABIN202443

anti-ESX Homeobox 1 antibody (AA 35-84)



[Go to Product page](#)

1 Image

Overview

Quantity:	100 µL
Target:	ESX Homeobox 1 (ESX1)
Binding Specificity:	AA 35-84
Reactivity:	Human
Host:	Rabbit
Clonality:	Polyclonal
Conjugate:	This ESX Homeobox 1 antibody is un-conjugated
Application:	Western Blotting (WB)

Product Details

Immunogen:	Synthetic peptide located between aa35-84 of human ESX1 (Q8N693, NP_703149). Percent identity by BLAST analysis: Human, Gibbon (100%), Marmoset (91%), Monkey (85%). Type of Immunogen: Synthetic peptide
Isotype:	IgG
Specificity:	Human ESX1
Predicted Reactivity:	Percent identity by BLAST analysis: Human (100%).
Purification:	Protein A purified

Target Details

Target:	ESX Homeobox 1 (ESX1)
---------	-----------------------

Target Details

Alternative Name: [ESX1 \(ESX1 Products\)](#)

Background: Name/Gene ID: ESX1

Synonyms: ESX1, ESXR1, Homeobox protein ESX1, ESX1-related protein, ESX1L, ESX1R, ESX homeobox 1

Gene ID: 80712

NCBI Accession: [NP_703149](#)

UniProt: [Q8N693](#)

Application Details

Application Notes: Approved: WB (1.25 µg/mL)

Comment: Target Species of Antibody: Human

Restrictions: For Research Use only

Handling

Format: Lyophilized

Reconstitution: After adding water, will consist of PBS buffer with 2 % sucrose

Concentration: Lot specific

Buffer: Lyophilized from PBS with 2 % sucrose

Handling Advice: Avoid repeat freeze-thaw cycles.

Storage: 4 °C, -20 °C

Storage Comment: Long term: -20°C, the use of 50% glycerol is recommended if storing aliquots in -20°C for long term use (up to 1 year)

Short term (less than 1 week): 4°C. Avoid freeze-thaw cycles.

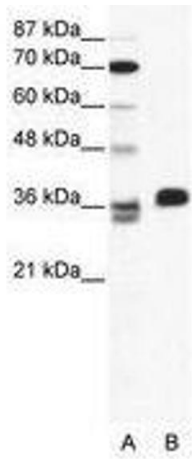


Image 1.