



Datasheet for ABIN202445  
**anti-RING1 antibody (N-Term)**



[Go to Product page](#)

1 Image

Overview

Quantity:	100 µL
Target:	RING1
Binding Specificity:	N-Term
Reactivity:	Human, Rat, Mouse, Dog, Cow, Guinea Pig, Horse, Hamster, Pig, Monkey
Host:	Rabbit
Clonality:	Polyclonal
Conjugate:	This RING1 antibody is un-conjugated
Application:	Western Blotting (WB)

Product Details

Immunogen:	Synthetic peptide from N-Terminus of human RING1 (Q06587, NP_002922). Percent identity by BLAST analysis: Human, Chimpanzee, Gorilla, Gibbon, Monkey, Galago, Marmoset, Mouse, Rat, Hamster, Elephant, Panda, Dog, Bovine, Horse, Pig, Guinea pig (100%), Opossum (92%).  Type of Immunogen: Synthetic peptide
Isotype:	IgG
Specificity:	Human RING1
Predicted Reactivity:	Percent identity by BLAST analysis: Human, Mouse, Rat, Dog, Bovine, Pig (100%).
Purification:	Protein A purified

## Target Details

---

Target:	RING1
Alternative Name:	RING1 ( <a href="#">RING1 Products</a> )
Background:	Name/Gene ID: RING1  Synonyms: RING1, Polycomb complex protein RING1, Ring finger protein 1, RING1A, RNF1
Gene ID:	6015
NCBI Accession:	<a href="#">NP_002922</a>
UniProt:	<a href="#">Q06587</a>

## Application Details

---

Application Notes:	Approved: WB (5 µg/mL)
Comment:	Target Species of Antibody: Human
Restrictions:	For Research Use only

## Handling

---

Format:	Lyophilized
Reconstitution:	After adding water, will consist of PBS buffer with 2 % sucrose
Concentration:	Lot specific
Buffer:	Lyophilized from PBS with 2 % sucrose
Handling Advice:	Avoid repeat freeze-thaw cycles.
Storage:	4 °C, -20 °C
Storage Comment:	Long term: -20°C, the use of 50% glycerol is recommended if storing aliquots in -20°C for long term use (up to 1 year)  Short term (less than 1 week): 4°C. Avoid freeze-thaw cycles.

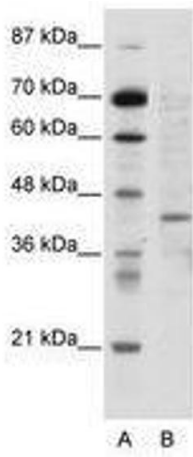


Image 1.