



[Go to Product page](#)

Datasheet for ABIN202448

anti-DAZAP1 antibody (C-Term)

3 Images

Overview

Quantity:	100 µL
Target:	DAZAP1
Binding Specificity:	C-Term
Reactivity:	Human, Mouse, Rat, Dog, Guinea Pig, Zebrafish (Danio rerio), Horse, Cow, Chicken, Xenopus laevis, Monkey, Pig, Bat
Host:	Rabbit
Clonality:	Polyclonal
Conjugate:	This DAZAP1 antibody is un-conjugated
Application:	Western Blotting (WB), Immunohistochemistry (IHC), Immunohistochemistry (Paraffin-embedded Sections) (IHC (p))

Product Details

Immunogen:	Synthetic peptide from C-Terminus of human DAZAP1 (Q96EP5, NP_061832). Percent identity by BLAST analysis: Human, Chimpanzee, Gorilla, Gibbon, Monkey, Galago, Marmoset, Mouse, Rat, Elephant, Panda, Dog, Bovine, Bat, Horse, Pig, Opossum, Guinea pig, Turkey, Chicken, Platypus, Xenopus, Stickleback, Zebrafish (100%), Salmon (92%). Type of Immunogen: Synthetic peptide
Isotype:	IgG
Specificity:	Human DAZAP1
Predicted Reactivity:	Percent identity by BLAST analysis: Mouse, Rat, Dog, Bovine, Horse, Guinea pig, Chicken,

Product Details

Zebrafish (100%).

Purification: Protein A purified

Target Details

Target: DAZAP1

Alternative Name: DAZAP1 ([DAZAP1 Products](#))

Background: Name/Gene ID: DAZAP1

Synonyms: DAZAP1, DAZ-associated protein 1, DAZ associated protein 1

Gene ID: 26528

NCBI Accession: [NP_061832](#)

UniProt: [Q96EP5](#)

Application Details

Application Notes: Approved: IHC, IHC-P, WB (1.25 µg/mL)

Comment: Target Species of Antibody: Human

Restrictions: For Research Use only

Handling

Format: Lyophilized

Reconstitution: After adding water, will consist of PBS buffer with 2 % sucrose

Concentration: Lot specific

Buffer: Lyophilized from PBS with 2 % sucrose

Handling Advice: Avoid repeat freeze-thaw cycles.

Storage: 4 °C, -20 °C

Storage Comment: Long term: -20°C, the use of 50% glycerol is recommended if storing aliquots in -20°C for long term use (up to 1 year)

Short term (less than 1 week): 4°C. Avoid freeze-thaw cycles.

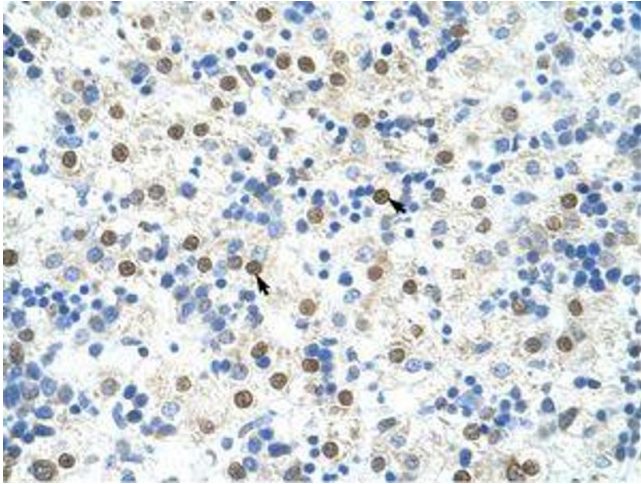


Image 1.

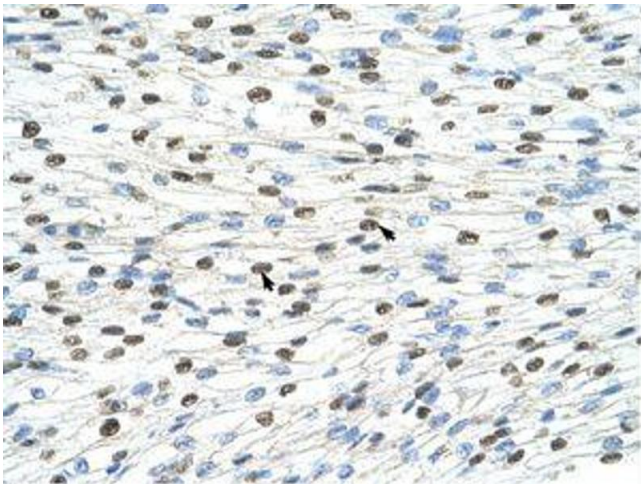


Image 2.

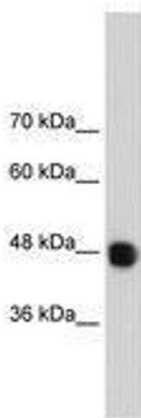


Image 3.