

Datasheet for ABIN202454
anti-Membralin antibody (AA 262-311)



[Go to Product page](#)

2 Images

Overview

Quantity:	100 µL
Target:	Membralin (TMEM259)
Binding Specificity:	AA 262-311
Reactivity:	Human, Guinea Pig, Rat, Dog, Cow, Bat, Chicken, Monkey, Xenopus laevis
Host:	Rabbit
Clonality:	Polyclonal
Conjugate:	This Membralin antibody is un-conjugated
Application:	Western Blotting (WB), Immunohistochemistry (Paraffin-embedded Sections) (IHC (p)), Immunohistochemistry (IHC)

Product Details

Immunogen:	Synthetic peptide located between aa262-311 of human TMEM259 (Q4ZIN3-2, NP_219488). Percent identity by BLAST analysis: Human, Chimpanzee, Gorilla, Gibbon, Monkey, Galago, Mouse, Rat, Panda, Bovine, Bat, Opossum, Guinea pig, Turkey, Zebra finch, Chicken, Xenopus, Stickleback (100%), Dog (86%). Type of Immunogen: Synthetic peptide
Isotype:	IgG
Specificity:	Human C19orf6 / Membralin
Predicted Reactivity:	Percent identity by BLAST analysis: Human, Bovine, Guinea pig, Chicken, Xenopus (100%) Dog (86%).

Product Details

Purification: Protein A purified

Target Details

Target: Membralin (TMEM259)

Alternative Name: TMEM259 / Membralin ([TMEM259 Products](#))

Background: Name/Gene ID: TMEM259

Synonyms: TMEM259, ASBABP1, C19orf6, MBRL, Membralin, R32184_3

Gene ID: 91304

NCBI Accession: [NP_219488](#)

UniProt: [Q4ZIN3](#)

Application Details

Application Notes: Approved: IHC, IHC-P, WB (1 µg/mL)

Comment: Target Species of Antibody: Human

Restrictions: For Research Use only

Handling

Format: Lyophilized

Reconstitution: After adding water, will consist of PBS buffer with 2 % sucrose

Concentration: Lot specific

Buffer: Lyophilized from PBS with 2 % sucrose

Handling Advice: Avoid repeat freeze-thaw cycles.

Storage: 4 °C, -20 °C

Storage Comment: Long term: -20°C, the use of 50% glycerol is recommended if storing aliquots in -20°C for long term use (up to 1 year)

Short term (less than 1 week): 4°C. Avoid freeze-thaw cycles.

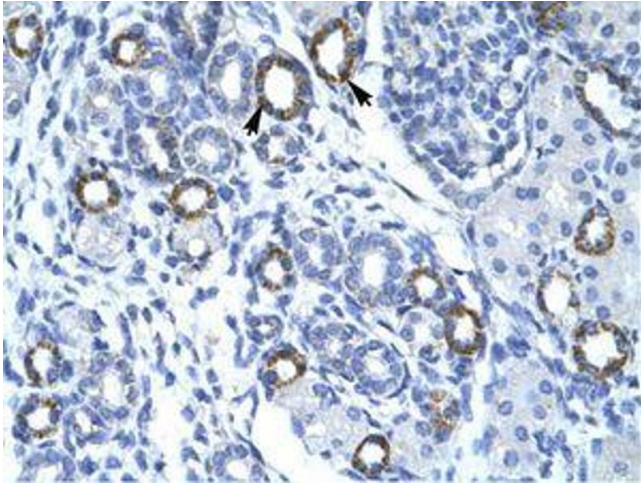


Image 1.

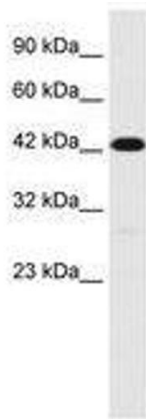


Image 2.