

Datasheet for ABIN202457  
**anti-CLIC5 antibody (AA 230-279)**



[Go to Product page](#)

2 Images

## Overview

Quantity:	100 µL
Target:	CLIC5
Binding Specificity:	AA 230-279
Reactivity:	Human, Mouse, Rat, Rabbit, Guinea Pig, Horse, Dog, Monkey
Host:	Rabbit
Clonality:	Polyclonal
Conjugate:	This CLIC5 antibody is un-conjugated
Application:	Western Blotting (WB), Immunohistochemistry (IHC), Immunohistochemistry (Paraffin-embedded Sections) (IHC (p))

## Product Details

Immunogen:	Synthetic peptide located between aa230-279 of human CLIC5 (Q9NZA1). Percent identity by BLAST analysis: Human, Chimpanzee, Gorilla, Gibbon, Monkey, Marmoset, Mouse, Rat, Rabbit, Horse (100%), Bovine, Bat, Pig, Opossum (92%), Lizard (86%), Galago, Elephant, Dog, Guinea pig, Turkey, Chicken, Platypus (85%).  Type of Immunogen: Synthetic peptide
Isotype:	IgG
Specificity:	Human CLIC5
Predicted Reactivity:	Percent identity by BLAST analysis: Human, Mouse, Rat, Rabbit, Horse (100%) Bovine, Pig (92%) Dog, Guinea pig, Chicken (85%).

## Product Details

Purification: Protein A purified

## Target Details

Target: CLIC5

Alternative Name: CLIC5 ([CLIC5 Products](#))

Background: Name/Gene ID: CLIC5  
Subfamily: Chloride channel - intracellular  
Family: Ion Channel  
  
Synonyms: CLIC5, CLIC5B, MST130, MSTP130

Gene ID: 53405

UniProt: [Q9NZA1](#)

Pathways: [Sensory Perception of Sound](#)

## Application Details

Application Notes: Approved: IHC, IHC-P, WB (1.25 µg/mL)

Comment: Target Species of Antibody: Human

Restrictions: For Research Use only

## Handling

Format: Lyophilized

Reconstitution: After adding water, will consist of PBS buffer with 2 % sucrose

Concentration: Lot specific

Buffer: Lyophilized from PBS with 2 % sucrose

Handling Advice: Avoid repeat freeze-thaw cycles.

Storage: 4 °C, -20 °C

Storage Comment: Long term: -20°C, the use of 50% glycerol is recommended if storing aliquots in -20°C for long term use (up to 1 year)  
Short term (less than 1 week): 4°C. Avoid freeze-thaw cycles.

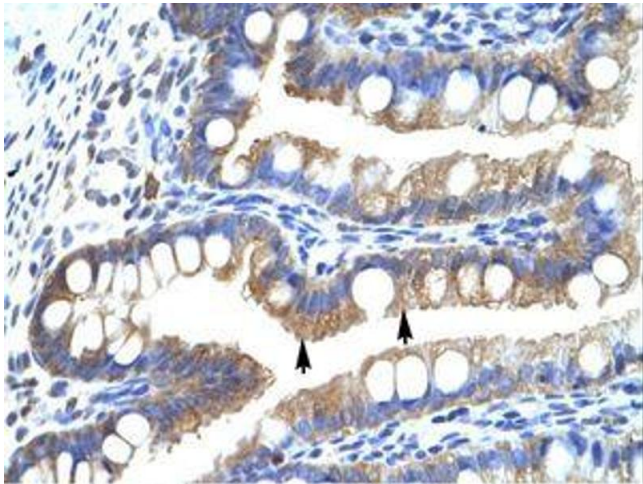


Image 1.

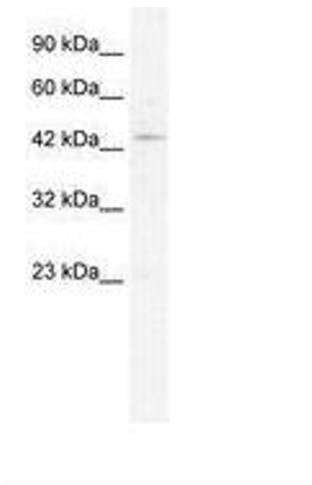


Image 2.