



[Go to Product page](#)

Datasheet for ABIN202462

anti-TEAD1 antibody (N-Term)

1 Image

Overview

| | |
|----------------------|--------------------------------------|
| Quantity: | 100 µL |
| Target: | TEAD1 |
| Binding Specificity: | N-Term |
| Reactivity: | Human, Mouse, Rabbit, Monkey |
| Host: | Rabbit |
| Clonality: | Polyclonal |
| Conjugate: | This TEAD1 antibody is un-conjugated |
| Application: | Western Blotting (WB) |

Product Details

| | |
|-----------------------|---|
| Immunogen: | Synthetic peptide from N-Terminus of human TEAD1 (P28347, NP_068780). Percent identity by BLAST analysis: Human, Gibbon, Monkey, Mouse, Elephant, Rabbit (100%), Rat (92%), Zebra finch, Chicken (85%). Type of Immunogen: Synthetic peptide |
| Isotype: | IgG |
| Specificity: | Human TEAD1 |
| Predicted Reactivity: | Percent identity by BLAST analysis: Human, Mouse, Rabbit (100%) Rat (92%) Chicken (85%). |
| Purification: | Protein A purified |

Target Details

| | |
|-------------------|---|
| Target: | TEAD1 |
| Alternative Name: | TEAD1 (TEAD1 Products) |
| Background: | Name/Gene ID: TEAD1 Synonyms: TEAD1, AA, Protein GT-IIC, TCF-13, TEAD-1, TEF-1, TEF1, TCF13, TEA domain family member 1, Transcription factor 13, NTEF-1, REF1 |
| Gene ID: | 7003 |
| NCBI Accession: | NP_068780 |
| UniProt: | P28347 |
| Pathways: | Regulation of Lipid Metabolism by PPARalpha |

Application Details

| | |
|--------------------|-----------------------------------|
| Application Notes: | Approved: WB (2.5 µg/mL) |
| Comment: | Target Species of Antibody: Human |
| Restrictions: | For Research Use only |

Handling

| | |
|------------------|---|
| Format: | Lyophilized |
| Reconstitution: | After adding water, will consist of PBS buffer with 2 % sucrose |
| Concentration: | Lot specific |
| Buffer: | Lyophilized. |
| Handling Advice: | Avoid repeat freeze-thaw cycles. |
| Storage: | 4 °C,-20 °C |
| Storage Comment: | Long term: -20°C, the use of 50% glycerol is recommended if storing aliquots in -20°C for long term use (up to 1 year) Short term (less than 1 week): 4°C. Avoid freeze-thaw cycles. |

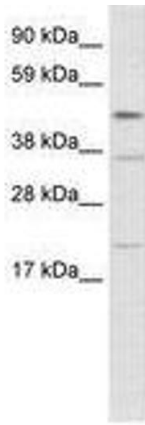


Image 1.