



Datasheet for ABIN202465  
**anti-SUV39H1 antibody (C-Term)**



[Go to Product page](#)

2 Images

Overview

Quantity:	100 µL
Target:	SUV39H1
Binding Specificity:	C-Term
Reactivity:	Human, Mouse, Rat, Cow, Dog, Guinea Pig, Rabbit, Zebrafish (Danio rerio), Hamster, Monkey
Host:	Rabbit
Clonality:	Polyclonal
Conjugate:	This SUV39H1 antibody is un-conjugated
Application:	Western Blotting (WB), Immunohistochemistry (IHC), Immunohistochemistry (Paraffin-embedded Sections) (IHC (p))

Product Details

Immunogen:	Synthetic peptide from C-Terminus of human SUV39H1 (O43463, NP_003164). Percent identity by BLAST analysis: Human, Chimpanzee, Gorilla, Orangutan, Gibbon, Monkey, Galago, Marmoset, Mouse, Rat, Hamster, Elephant, Dog, Bovine, Rabbit, Guinea pig (100%), Bat, Opossum (92%), Xenopus (85%), Zebrafish (84%).  Type of Immunogen: Synthetic peptide
Isotype:	IgG
Specificity:	Human SUV39H1
Predicted Reactivity:	Percent identity by BLAST analysis: Human, Mouse, Rat, Dog, Rabbit, Guinea pig (100%) Zebrafish (84%).

## Product Details

---

Purification: Protein A purified

## Target Details

---

Target: SUV39H1

Alternative Name: SUV39H1 ([SUV39H1 Products](#))

Background: Name/Gene ID: SUV39H1

Synonyms: SUV39H1, H3-K9-HMTase 1, MG44, KMT1A, Lysine N-methyltransferase 1A, Su(var)3-9 homolog 1, SUV39H

Gene ID: 6839

NCBI Accession: [NP\\_003164](#)

UniProt: [O43463](#)

## Application Details

---

Application Notes: Approved: IHC, IHC-P, WB (1.25 µg/mL)

Comment: Target Species of Antibody: Human

Restrictions: For Research Use only

## Handling

---

Format: Lyophilized

Reconstitution: After adding water, will consist of PBS buffer with 2 % sucrose

Concentration: Lot specific

Buffer: Lyophilized from PBS with 2 % sucrose

Handling Advice: Avoid repeat freeze-thaw cycles.

Storage: 4 °C, -20 °C

Storage Comment: Long term: -20°C, the use of 50% glycerol is recommended if storing aliquots in -20°C for long term use (up to 1 year)

Short term (less than 1 week): 4°C. Avoid freeze-thaw cycles.

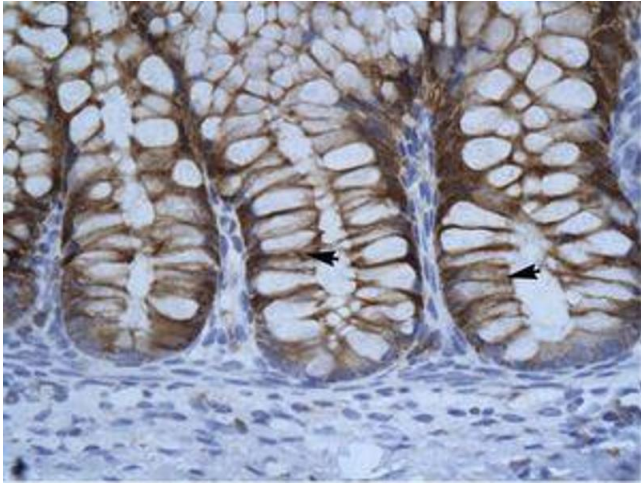


Image 1.



Image 2.